

# Shut-off & Lockout Valves

## 1/4" to 1-1/2" port size

### Contents

<b>T72 Excelon Shut-off &amp; Lockout Valves</b>	
1/4", 3/8" Port Sizes .....	ALE-16-2
<b>T73 Excelon Shut-Off &amp; Lockout Valves</b>	
1/4", 3/8", 1/2" Port Sizes .....	ALE-16-4
<b>T74 Excelon Shut-Off &amp; Lockout Valves</b>	
3/8", 1/2", 3/4" Port Sizes .....	ALE-16-6
<b>T64 Olympian Plus Shut-off &amp; Lockout Valves</b>	
1/4", 3/8", 1/2", 3/4" Port Sizes .....	ALE-16-8
<b>T68 Olympian Plus Shut-off &amp; Lockout Valves</b>	
3/4", 1", 1 1/4", 1 1/2" Port Sizes .....	ALE-16-10
<b>C00 Lockout Valves 1/4" through 1-1/2" Port Sizes</b>	ALE-16-12
<b>Option and FAQ's</b> .....	ALE-16-14



**T72**



**T73**



**T74**



**T64**



**T68**



**C00**

**Excelon T72 Shut-off & Lockout Valves  
1/4", 3/8" Port Sizes**

- EXCELRON design allows in-line installation or modular installation
- T72B 2-port/2-position shut-off valves no exhaust
- T72T 3-port/2-position shut-off valves with 10-32 tapped exhaust
- T72E 3-port/2-position lockout valves help conform to OSHA Lockout Regulations in USA market. Exhaust outlet is not tapped.
- Valves can be locked in closed position only
- Modular installations with EXCELRON 72, 73, and 74 series can be made to suit particular applications



**Ordering Information.** Models listed have PTF threads.

Port Size	2-Port/2-Position No Exhaust Outlet	3-Port/2-Position (OSHA) Exhaust Port not tapped	3-Port/2-Position Threaded Exhaust Port	Weight lbs (kg)
1/4"	T72B-2AA-P1N	T72E-2AA-P1N	T72T-2AA-P1N	0.79 (0.36)
3/8"	T72B-3AA-P1N	T72E-2AA-P1N	T72T-3AA-P1N	0.86 (0.39)

**Alternative Models**

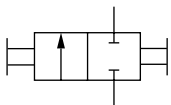
Valve Type	Substitute
2-port/2-position Black slide, No exhaust outlet	B
3-port/2-position Yellow slide, Unthreaded exhaust outlet	E
3-port/2-position Red slide, Threaded exhaust port	T

T
7
2
★
-
★
★
A
-
P
1
★

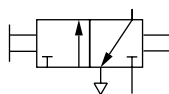
Options	Substitute
None	N
T73T with exhaust silencer	S
T73T with exhaust diffuser	D

Threads	Substitute
PTF	A
ISO Rc taper	B
ISO G parallel	G

Port Size	Substitute
1/4"	2
3/8"	3

**ISO Symbols**


2-Port/2-Position



3-Port/2-Position

**See Section ALE-25 for Accessories**



**Technical Data**

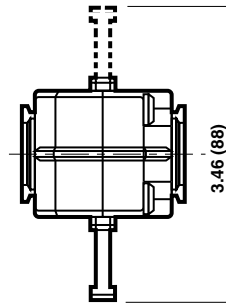
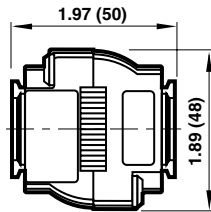
Fluid: Compressed air  
 Maximum Pressure: 250 psig (17 bar)  
 Operating Temperature\*: 0° to 150°F (-20° to 65°C)  
 \* Air supply must be dry enough to avoid ice formation at temperatures below 35°F (2°C).  
 Cv factor from IN to OUT ports  
     1/4" ports: 4.0  
     3/8" ports: 8.0  
 Cv factor from OUT to EXHAUST ports on 3-port/2-position valves: 0.2.  
 Exhaust port threads on T72T models: 10-32  
 Hole diameter in slide for padlock: 5/16" (8 mm)  
 Materials  
     Body: Zinc  
     Slide: Acetal plastic  
     Elastomers: Nitrile

**Service Kits**

Item	Type	Part Number
Service kit	Actuator seals and slide	4384-510

Service kit includes actuator seals and slide.

All Dimensions in Inches (mm)



**Excelon T73 Shut-Off & Lockout Valves**  
**1/4", 3/8", 1/2" Port Sizes**

- **EXCELON** design allows in-line or modular installation
- T73B 2-port/2-position shut-off valves no exhaust
- T73T 3-port/2-position shut-off valves with 10-32 tapped exhaust
- T73E 3-port/2-position lockout valves help conform to OSHA Lockout Regulations in USA market. Exhaust outlet is not tapped.
- Valves can be locked in closed position only.
- Modular installations with EXCELON 72, 73, and 74 series can be made to suit particular applications



**Ordering Information.** Models listed have PTF parallel threads.

Port Size	2-Port/2-Position No exhaust outlet	3-Port/2-Position Unthreaded exhaust outlet	3-Port/2-Position Threaded exhaust port	Weight lbs (kg)
1/4"	T73B-2AA-P1N	T73E-2AA-P1N	T73T-2AA-P1N	0.7 (0.3)
3/8"	T73B-3AA-P1N	T73E-3AA-P1N	T73T-3AA-P1N	0.7 (0.3)
1/2"	T73B-4AA-P1N	T73E-4AA-P1N	T73T-4AA-P1N	0.7 (0.3)

**Alternative Models**

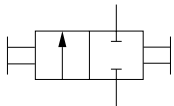
T 7 3 ★ - ★ ★ A - P 1 ★

Valve Type	Substitute
2-port/2-position Black slide, No exhaust outlet	B
3-port/2-position Yellow slide, Unthreaded exhaust outlet	E
3-port/2-position Red slide, Threaded exhaust port	T

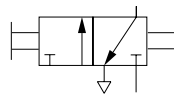
Port Size	Substitute
1/4"	2
3/8"	3
1/2"	4

Options	Substitute
None	N
T73T with exhaust silencer	S
T73T with exhaust diffuser	D

Threads	Substitute
PTF	A
ISO R <sub>c</sub> taper	B
ISO G parallel	G

**ISO Symbols**


2-Port/2-Position



3-Port/2-Position

**See Section ALE-25 for Accessories**



**Technical Data**

Fluid: Compressed air  
 Maximum pressure: 250 psig (17 bar)  
 Operating temperature: 0° to 150°F (-20° to 65°C)  
 \* Air supply must be dry enough to avoid ice formation at temperatures below 35°F (2°C).

**Cv factor**

IN to OUT ports:

1/4" ports: 4.0

3/8" ports: 8.0

1/2" ports: 7.8

OUT to EXHAUST ports on 3-port/2-position valves: 0.2

Exhaust port threads on T73T models: 10-32

Hole diameter in slide for padlock: 5/16" (8 mm)

**Materials**

Body: Zinc

Slide: Acetal plastic

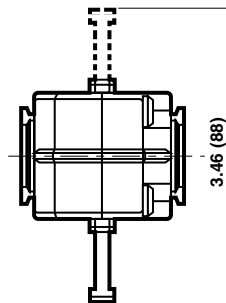
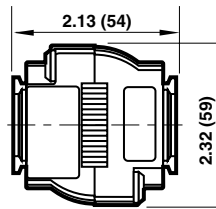
Elastomers: Nitrile

**Service Kits**

Item	Type	Part Number
Service kit	T73B (black slide)	4384-610
	T73E (yellow slide)	4384-611
	T73T (red slide)	4384-612

Service kit includes seals and slide.

All Dimensions in Inches (mm)



**Excelon T74 Shut-Off & Lockout Valves**  
**3/8", 1/2", 3/4" Port Sizes**

- **EXCELRON** design allows in-line or modular installation
- T74B 2-port/2-position shut-off valves no exhaust
- T74T 3-port/2-position shut-off valves with 1/8" tapped exhaust
- T74E 3-port/2-position lockout valves help conform to OSHA Lockout Regulations in USA market. Exhaust outlet is not tapped.
- Valves can be locked in the closed position only
- Modular installations with EXCELRON 72, 73, and 74 series can be made to suit particular applications



**Ordering Information.** Models listed have PTF threads.

Port Size	2-Port/2-Position Padlock closed only. No exhaust outlet.	3-Port/2-Position OSHA Padlock closed only. Unthreaded exhaust outlet.	3-Port/2-Position Padlock closed only. Threaded exhaust port.	Weight lbs (kg)
3/8"	T74B-3AA-P1N	T74E-3AA-P1N	T74T-3AA-P1N	0.69 (0.32)
1/2"	T74B-4AA-P1N	T74E-4AA-P1N	T74T-4AA-P1N	0.65 (0.30)
3/4"	T74B-6AA-P1N	T74E-6AA-P1N	T74T-6AA-P1N	0.62 (0.28)

**Alternative Models**

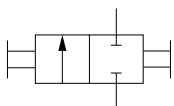
Valve Type	Substitute
2-port/2-position Black slide, No exhaust outlet	B
3-port/2-position Yellow slide, Unthreaded exhaust outlet	E
3-port/2-position Red slide, Threaded exhaust port	T

T 7 4 ★ - ★ ★ A - P 1 ★

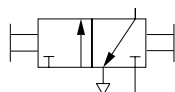
Options	Substitute
None	N
Silencer installed in T74T exhaust port	S

Threads	Substitute
PTF	A
ISO R <sub>c</sub> taper	B
ISO G parallel	G

Port Size	Substitute
3/8"	3
1/2"	4
3/4"	6

**ISO Symbols**


2-Port/2-Position



3-Port/2-Position

**See Section ALE-25 for Accessories**



**Technical Data**

Fluid: Compressed air  
 Maximum pressure: 250 psig (17 bar)  
 Temperature range: 0° to 150°F (-20° to 65°C)  
 \* Air supply must be dry enough to avoid ice formation at temperatures below 35°F (2°C).

Cv factor

IN to OUT ports:

- 3/8" ports: 7.1
- 1/2" ports: 8.1
- 3/4" ports: 7.7

OUT to EXHAUST ports on 3-port/2-position valves: 0.2

Exhaust port threads on T74T models:

- 1/8 PTF with PTF main ports
- 1/8" ISO R<sub>C</sub> with ISO G and ISO R<sub>C</sub> main ports

Hole diameter in slide for padlock: 0.29" (7.5 mm)

Materials

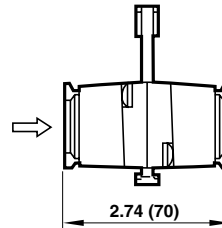
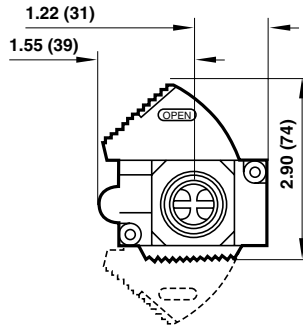
- Body: Zinc
- Slide: Acetal plastic
- Elastomers: Nitrile

**Service Kits**

Item	Type	Part Number
Service kit	T74B (black slide)	4384-711
	T74E (yellow slide)	4384-710
	T74T (red slide)	4384-713

Service kit includes seals and slide.

All Dimensions in Inches (mm)



**Olympian Plus T64 Shut-off & Lockout Valves**  
**1/4", 3/8", 1/2", 3/4" Port Sizes**

- Olympian Plus plug in design
- T64B 2-port/2-position shut-off valves no exhaust
- T64T 3-port/2-position shut-off valves with 1/8" tapped exhaust
- T64E 3-port/2-position lockout valves help conform to OSHA Lockout Regulations in USA market. Exhaust outlet is not tapped.
- Valves can be locked in closed position only
- Attaches to yoke, upstream or downstream of air processing units



**Ordering Information.** Models listed have PTF threads.

Port Size	2-Port/2-Position No exhaust outlet	3-Port/2-Position OSHA Unthreaded exhaust port	3-Port/2-Position Threaded exhaust port	Weight lbs (kg)
1/4"	T64B-2AB-P1N	T64E-2AB-P1N	T64T-2AB-P1N	0.89 (0.40)
3/8"	T64B-3AB-P1N	T64E-3AB-P1N	T64T-3AB-P1N	0.88 (0.40)
1/2"	T64B-4AB-P1N	T64E-4AB-P1N	T64T-4AB-P1N	0.84 (0.38)
3/4"	T64B-6AB-P1N	T64E-6AB-P1N	T64T-6AB-P1N	0.84 (0.38)

**Alternative Models**

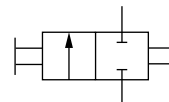
T 6 4 ★ - ★ ★ ★ - P 1 N

Valve Type	Substitute
2-port/2-position Black slide, No exhaust outlet	B
3-port/2-position Yellow slide, Unthreaded exhaust outlet	E
3-port/2-position Red slide, Threaded exhaust port	T

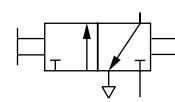
Port Size	Substitute
1/4"	2
3/8"	3
1/2"	4
3/4"	6

Porting	Substitute
Threaded inlet only	B
Threaded outlet only	C

Threads	Substitute
PTF	A
ISO Rc taper	B
ISO G parallel	G

**ISO Symbols**


2-Port/2-Position



3-Port/2-Position

See Section ALE-25 for Accessories



**Technical Data**

Fluid: Compressed air  
 Maximum pressure: 250 psig (17 bar)  
 Operating temperature\*: 0° to 175°F (-20° to 80°C)

\* Air supply must be dry enough to avoid ice formation at temperatures below 35°F (2°C).

Cv factor from IN to OUT ports

- 1/4 port size: 2.6
- 3/8 port size: 5.5
- 1/2 port size: 6.7
- 3/4 port size: 7.5

Exhaust port threads on T64T models:

- 1/8 PTF with PTF main ports
- 1/8 ISO Rc with ISO G and ISO Rc main ports

Materials

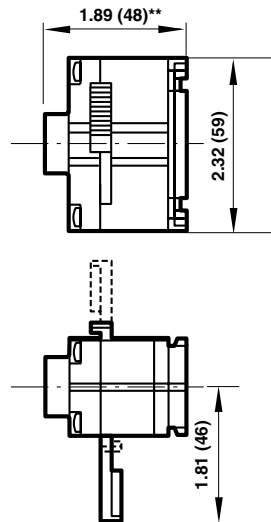
- Body: Zinc
- Slide: Acetal plastic
- Elastomers: Nitrile

**Service Kits**

Item	Type	Part Number
Service kit	T74B (black slide)	
	T74E (yellow slide)	
	T74T (red slide)	

Service kit includes seals and slide.

All Dimensions in Inches (mm)



\*\* Models with 3/4" ports

**Olympian Plus T68 Shut-off & Lockout Valves**  
**3/4", 1", 1-1/4", 1-1/2" Port Sizes**

- Olympian plug in system
- 2-port/2-position and 3-port/2-position shut-off valves
- Full flow to exhaust obtained with quick 1/4 turn of knob
- Ball valve design provides low pressure drop
- Can be locked in open or closed position
- Models available for attachment to the inlet or outlet end of the yoke
- Inline models available
- T68E 3-port/2-position lockout valves help conform to OSHA Lockout Regulations in USA market. Exhaust outlet is not tapped.



**Ordering Information.** Models listed have PTF threads and include screws and seals for yoke connection. Yellow handle locks in closed position.

Port Size	3-Port/2-Position, Unthreaded Exhaust Port	Weight lbs (kg)	2-Port/2-Position No Exhaust Outlet	Weight lbs (kg)
3/4"	T68E-6AB-B2N	2.21 (1.00)	T68A-6AB-B2N	2.21 (1.00)
1"	T68E-8AB-B2N	2.12 (0.96)	T68A-8AB-B2N	1.92 (0.87)
1-1/4"	T68E-AAB-B2N	2.07 (0.94)	T68A-AAB-B2N	2.21 (1.00)
1-1/2"	T68E-BAB-B2N	2.16 (0.98)	T68A-BAB-B2N	2.16 (0.98)

**Alternative Models**

Valve Type	Substitute
2-port/2-position No exhaust outlet.	A
3-port/2-position Unthreaded exhaust.	C
3-port/2-position Yellow handle locks in closed position only. Unthreaded exhaust.	E
3-port/2-position Threaded exhaust port.	H

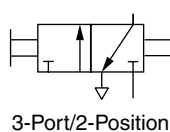
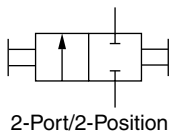
T 6 8 ★ - ★ ★ ★ - B 2 ★

Options	Substitute
None	N
Silencer installed in T68H exhaust port	S

Porting	Substitute
Threaded inlet (upstream)	B
Threaded outlet (downstream)	C
Inline mounting (Threaded inlet and outlet port)	A

Threads	Substitute
PTF	A
ISO R <sub>C</sub> taper	B
ISO G parallel	G

Port Size	Substitute
3/4"	6
1"	8
1-1/4"	A
1-1/2"	B

**ISO Symbols**


**See Section ALE-25 for Accessories**



**Technical Data**

Fluid: Compressed air

Maximum pressure: 250 psig (17 bar)

Operating temperature\*: 0° to +175°F (-20° to +80°C)

\* Air supply must be dry enough to avoid ice formation at temperatures below +35°F (+2°C).

Cv factor:

IN to OUT port: 27.5

OUT to EXHAUST port: 0.16

Exhaust port threads on T68H models: 1/4

Materials:

Body: Aluminum

Handle: Zinc

Seals: Nitrile

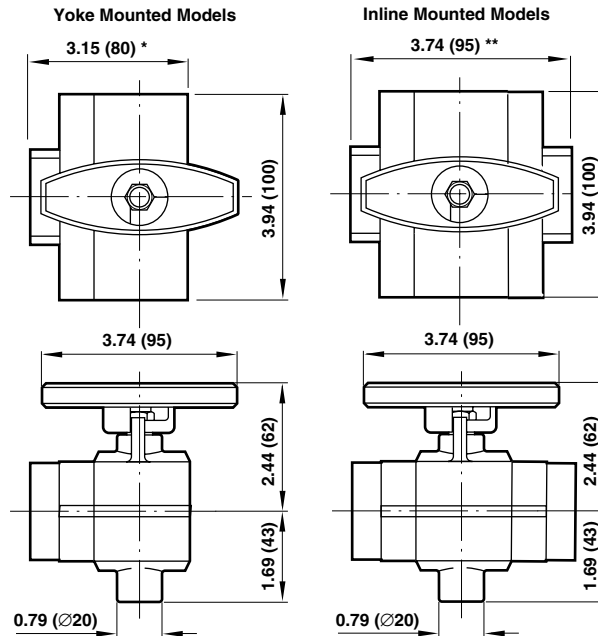
Ball: Brass

**Service Kits**

Item	Part Number
Service kit	4384-300

Service kit includes, valve spring, slip ring, valve assembly, diaphragm assembly and necessary seals and 'o' rings.

All Dimensions in Inches (mm)



\* 3.35" (85 mm) for 1-1/2" ported models.

\*\* 4.13" (105 mm) for 1-1/2" ported models.

## Inline Lockout Valves

For installation in 1/4" through 1-1/2" air lines.

- 3-way, manually operated, full flow lockout valves can be locked in the closed position with a customer supplied padlock.
- In the closed position, these valves shut off the flow of air between the inlet and outlet ports and exhaust the downstream air.
- Helps you comply to OSHA regulations, as they relate to OSHA regulation 29 CFR Part 1910, standard for lockout/tagout procedures.



### Options

C0021A/D and C0023A/D Valves with fluorocarbon elastomers: Specify **1FA** after the desired valve model number.

C0022A/D and C0024A/D Valves with fluorocarbon elastomers: Specify **1EX** after the desired valve model number.

C0021A/D Valves with tapped muffler base that accepts a muffler with 3/4" NPT male threads: Specify **1M2** after the desired valve model number.  
Recommended muffler: **MB006A**.

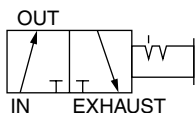
C0022A/D Valves with tapped muffler base that accepts a muffler with 1" NPT male threads: Specify **1M1** after the desired valve model number.  
Recommended muffler **MB008A**.

Note: Standard valves have a black handle. To order valves with a red handle, change the second position of the model number to an R (e.g., C0021A would change to CR021A).

### Order Information

Basic Size	Port Size PTF	Model Numbers		Basic Size	Port Size ISO G	Model Numbers		Cv Factor	
		Without Muffler	With Muffler			Without Muffler	With Muffler	In-Out Ports	Out-Exhaust Ports
1/2"	1/4"	C0021A	C0023A	1/2"	G1/4	C0041A	C0043A	4.2	6.0
	3/8"	C0021B	C0023B		G3/8	C0041B	C0043B	6.6	6.6
	1/2"	C0021C	C0023C		G1/2	C0041C	C0043C	9.3	7.9
	3/4"	C0021D	C0023D		G3/4	C0041D	C0043D	12.6	8.6
1"	3/4"	C0022A	C0024A	1"	G3/4	C0042A	C0044A	10.6	8.0
	1"	C0022B	C0024B		G1	C0042B	C0044B	16.2	9.2
	1-1/4"	C0022C	C0024C		G1-1/4	C0042C	C0044C	25.3	8.9
	1-1/2"	C0022D	C0024D		-	-	-	22.4	10.0

### Graphic Symbol





**Technical Data**

Fluid: Compressed air  
 Maximum Pressure: 300 psig (20.4 bar)  
 Temperature Range: -20° to 175°F\* (-29° to 79°C).  
 \*With a dew point of supply air less than air temperature below 35°F (2°C).  
 Maximum Diameter of Lock Shackle: 5/16" (8mm)

**Materials of Construction**

- Valve Body: Aluminum
- Muffler Base: Zinc
- Spool, T-Handle, Muffler Shell: Aluminum
- Spring Detent: Stainless Steel
- Elastomers
  - Standard: Nitrile and Polyurethane
  - Optional: Fluorocarbon

**Repair Kits**

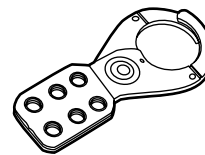
- C0021A/D and C0023A/D Valves:
  - Standard Elastomers: 53474-43
  - Fluorocarbon Elastomers: 53474-44
- C0022A/D and C0024A/D Valves:
  - Standard Elastomers: 53475-34
  - Fluorocarbon Elastomers: 53475-36
- Replacement Mufflers\* for C0021A/C0024D Valves
  - C0021A/D and C0023A/D Valves: ML004F
  - C0022A/D and C0024A/D Valves: ML008F

\*Contains all bolts and washers required to flange mount with the respective sized lockout valve.

**Lockout Hasp**

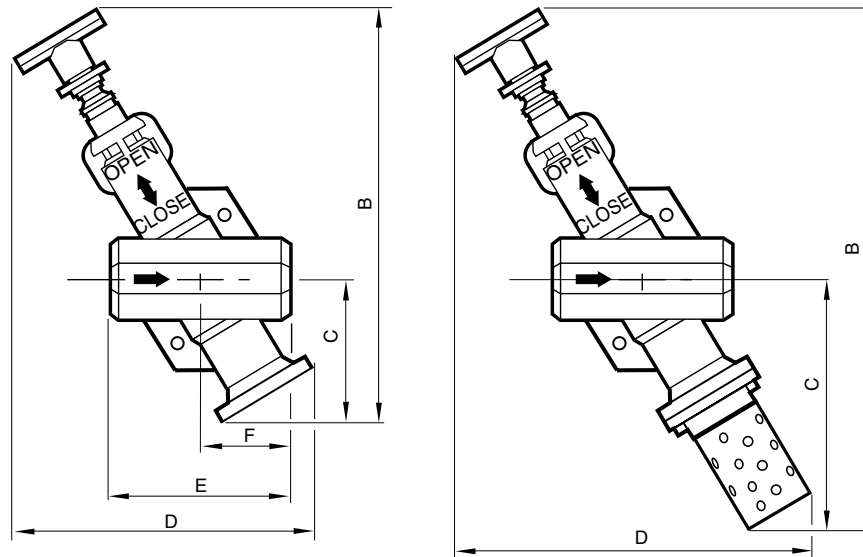
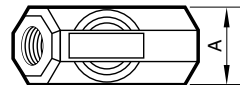
Part Number: 54547-01

The 1-1/2" diameter jaws can be used with all Norgren Inline, Olympian, and Poppet Lockout Valves except the T15. High-tensile steel affords extra protection against unauthorized access. Red vinyl coated and plated to resist rust. Locking holes accommodate padlocks up to 11/32" shackle diameter.



Lockout Hasp

All Dimensions in Inches (mm)



Valve Type	A	B		C		D		E	F
		Without Muffler	With Muffler	Without Muffler	With Muffler	Without Muffler	With Muffler		
All 1/2" basic	1.87 (48)	9.33 (237)	11.78 (299)	2.90 (74)	5.35 (136)	6.97 (177)	7.97 (202)	4.00 (102)	2.00 (51)
All 1" basic	2.26 (57)	12.07 (307)	15.72 (399)	4.13 (105)	7.78 (198)	8.65 (220)	10.46 (266)	5.00 (127)	2.50 (64)



### 1.3.1 What Options are Available?

The Olympian 1" product line has a ball valve (T15), but recent products have moved to the slide type. They are generally available in 2/2 (non-exhausting) and 3/2 types, for use upstream or optionally downstream of FRL units.

### 1.3.2 Can they be Locked?

All the slide valves in Excelon and Olympian Plus can be locked closed using the padlock hole provided in the blade. For certain applications where it is vital that the air is not turned off, a lock open and closed option is possible (eg T64A or T64C). The T15 can be locked by dropping in the lock ring and fitting a padlock.

### 1.3.3 What is Patented about the T64/T74?

The design of a slide valve where the exhaust air is captured rather than venting to atmosphere past the slide is the patented feature.

### 1.3.4 Why are the Blades Different Colors?

The colour of the slide depends on the valve function and the market in which it is sold.

Yellow = 3/2 exhaust not tapped OSHA (USA)  
Black = 2/2 Excelon 74  
Red = 3/2 exhaust tapped (Europe)

### 1.3.5 Do we have Downstream Shut Off Valves?

Yes. The Excelon valves can be used either upstream or downstream, and will always vent the downstream system. In Olympian Plus you need to use a special downstream version.

### 1.3.6 Is there a Shut Off which Fits Between Yokes in Olympian Plus?

Yes. This can be used within a build, or in Duplex assemblies.

### 1.3.7 Can I Use an Upstream Shut Off Downstream?

The Excelon family valves can be used either upstream or downstream. If used downstream, remember that the FRL units remain pressurized - the valve vents the downstream system.

There are special versions of the Olympian Plus and 15 Series valves for downstream use.