

- Modular installation only
- High-flow, spring return valves
- 2-port/2-position valves available as normally closed or normally open valves
- 3-port/2-position valves available as normally closed valves.
- Cushioned poppets for long life



Ordering Information. Models listed include PTF threads in the pilot and exhaust ports.

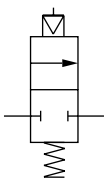
Installation Type	2 Port/2 Position Normally Closed	2 Port/2 Position Normally Open	3 Port/2 Position Normally Closed	Weight lb (kg)
Modular*	P74A-NAA-NNN	P74B-NAA-NNN	P74C-NAA-NNN	1.20 (0.54)

* Valve main ports are unthreaded. To install in air line use Quikclamp™ and Quikclamp pipe adapters or connect to other Excelon 74 units.

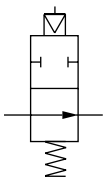
Alternative Models

Type	Substitute		Connector	Substitute
2-port/2-position, NC	A		None	N
2-port/2-position, NO	B		Coil	Substitute
3-port/2-position, NC	C		None	N
Main Port Threads	Substitute		Manual Override	Substitute
No threaded ports	N		None	N
Pilot and Exhaust Port Threads	Substitute		Operator	Substitute
PTF	A		Air	A
ISO Rc	B			
ISO G	G			

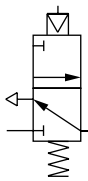
ISO Symbols



2-Port/2-Position
Normally Closed



2-Port/2-Position
Normally Open



3-Port/2-Position
Normally Closed

See Section ALE-24 for Accessories



Technical Data

Fluid: Filtered and lubricated compressed air
 Main valve inlet pressure range: 0 to 250 psig (0 to 17 bar)
 Pilot supply inlet pressure range: Equal to or greater than main valve inlet pressure, but not less than 30 psig (2 bar) and not greater than 250 psig (17 bar).

Temperature range*: -20° to 175°F (-30° to 80°C)

* Air supply must be dry enough to avoid ice formation at temperatures below 35°F (2°C).

Average flow factor (Cv) of 2-port valves: 4.0

Average flow factor (Cv) of 3-port valves

In-out ports: 3.2

Out-exhaust ports: 5.3

Pilot port: 1/4 PTF, ISO G, or ISO Rc

Exhaust port on 3 port/2 position valves: 1/2 PTF, ISO G, or ISO Rc

Materials

Body: Zinc

Pistons, poppets: Aluminum

Elastomers: Nitrile


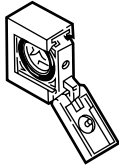
Operator: Aluminum

Service Kit

Item	Type	Part Number
Service kit	Seal & Gasket	53474-37
Quikclamp service kit	2 o-rings	4384-770

Service kit includes all o-rings, head gasket and seals.

Modular Components (necessary for using this valve)

	
Quikmount Pipe Adapters (each kit contains one adapter) ** Size PTF Threads ISO Rc Threads ISO G Threads	
1/4"	4315-01 4315-05 4315-09
3/8"	4315-01 4315-06 4315-10
1/2"	4315-03 4315-07 4315-11
3/4"	4315-04 4315-08 4315-12
	Quikclamp † 4314-51

** Each pipe adapter adds 0.71" (18 mm) to the overall length of a valve.

† Each Quikclamp adds 0.7" (13.6 mm) to the overall length of a valve.

All Dimensions in Inches (mm)

