

Excelon 74 Oil Vapor Removal Filter 3/8", 1/2", 3/4" Port Sizes

- Excelon design allows in-line or modular installation
- Adsorbing type activated carbon element removes oil vapors and most hydrocarbon odors
- Quick release bayonet bowl
- Long service life of filter element. Minimum life of 400 hours when an oil removal filter is installed upstream and the filtration temperature is in the region of 70° to 80°F (20° to 26°C).
- Modular installations with Excelon 72, 73, and 74 series can be made to suit particular applications



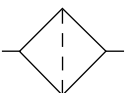
Ordering Information. Models listed include PTF threads and a closed bottom metal bowl.

Port Size	Model	Flow* scfm (dm ³ /s)	Weight lb (kg)
3/8"	F74V-3AN-EMA	27 (13)	2.54 (1.15)
1/2"	F74V-4AN-EMA	27 (13)	2.51 (1.14)
3/4"	F74V-6AN-EMA	27 (13)	2.46 (1.12)

* Maximum flow with 90 psig (6.3 bar) inlet pressure to maintain stated oil vapor removal performance.

Alternative Models

		F 7 4 V - ★ ★ ★ - ★ ★ ★				
Port Size	Substitute				Element	Substitute
3/8"	3				Adsorbing (Activated carbon without color indicator)	A
1/2"	4					
3/4"	6					
Threads	Substitute				Bowl	Substitute
PTF	A				Metal	M
ISO Rc taper	B				Transparent with guard	P
ISO G parallel	G					
Options	Substitute				Drain	Substitute
No options	N				Closed bottom (no drain)	E

ISO Symbols

Auto Drain
See Section ALE-25 for Accessories



Technical Data

Fluid: Compressed air

Maximum pressure:

Transparent bowl: 150 psig (10 bar)

Metal bowl: 250 psig (17 bar)

Operating temperature*:

Transparent bowl: 0° to 125°F (-20° to 50°C)

Metal bowl: 0° to 150°F (-20° to 65°C)

* Air supply must be dry enough to avoid ice formation at temperatures below 35°F (2°C)

Air quality: Within ISO 8573-1, Class 1 ** (oil content) when installed downstream of an oil removal filter

** See ALE-1-G for specification details.

Maximum remaining oil content in outlet air: 0.003 ppm at 70°F (20°C)

Maximum flow at 90 psig (6.3 bar) inlet pressure to maintain stated oil removal performance: 27 scfm (13 dm³/s)

Nominal bowl size: 7 fluid ounce (0.2 liter)

Required prefilter: Oil removal filter with equivalent pipe size and flow capacity equal to or greater than the vapour removal filter.

Materials

Body: Aluminum

Bowl:

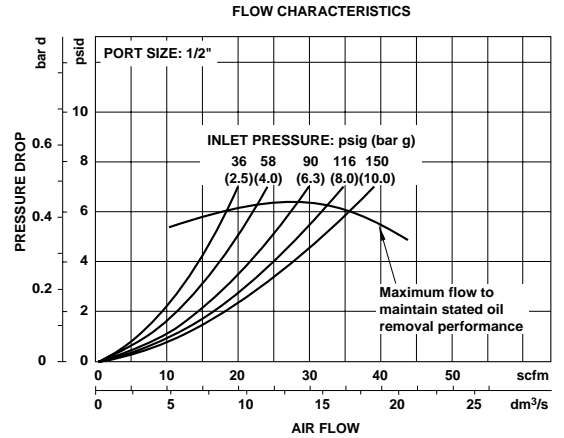
Transparent: Polycarbonate with steel bowl guard

Metal: Aluminum

Element: Activated carbon and aluminum

Elastomers: Neoprene and Nitrile

Typical Performance Characteristics

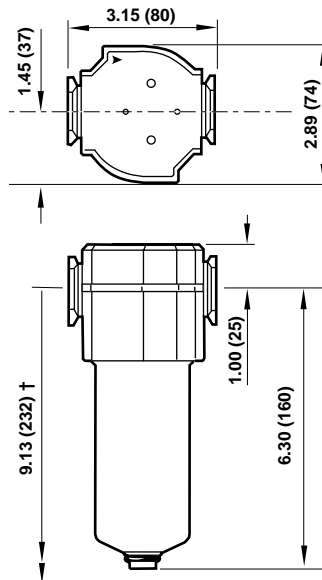


Service Kits

Item	Type	Part Number
Service kit	Seal and Gasket	4380-750
Replacement element	Adsorbing	4341-01

Service kit includes element seal and bowl seal.

All Dimensions in Inches (mm)



† Minimum clearance required to remove bowl.