

R72M Excelon® 72 Manifold Regulator

1/4", 3/8" Port Sizes

Excelon® design allows in-line or modular installation

Manifold typically up to six regulators without booster signal

Technical data

Fluid:

Compressed air

Maximum pressure:

290 psig (20 bar)

Operating temperature*:

-30° to 150°F (-34° to 65°C)

* Air supply must be dry enough to avoid ice formation at temperatures below 35°F (2°C).

Two inlet ports:

1/4" or 3/8" PTF

1/4" or 3/8" ISO G

One outlet port:

1/4" PTF with PTF inlet ports

1/4" ISO Rc with ISO G inlet ports

One gauge port:

1/8" PTF with PTF inlet ports

1/8" ISO Rc with ISO G inlet ports

Materials

Body: Zinc

Bonnet: Acetal (Zinc on 250 psi model)

Elastomers: Nitrile

Bottom plug: Acetal



Ordering Information.

Models listed include PTF threads, knob adjustment, relieving diaphragm, 5 to 150 psig (0.3 to 10 bar) outlet pressure adjustment range* with gauge.

Inlet Port (2)	Outlet Port (1)	Model	Flow† scfm (dm ³ /s)	Weight lb (kg)
1/4"	1/4"	R72M 2AK RMG	83 (39)	0.79 (0.36)
3/8"	1/4"	R72M 3AK RMG	83 (39)	0.79 (0.36)

† Typical flow with 150 psig (10 bar) inlet pressure, 90 psig (6.3 bar) set pressure and a 15 psig (1 bar) drop from set.

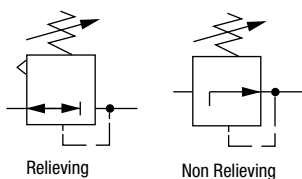
Alternative Models

Type	Substitute	Gauge	Substitute
Manifold	M	With	G
		Without	N
Inlet Port Size	Substitute	Outlet Pressure Adjustment Range*	Substitute
1/4"	2	5 to 30 psig (0.3 to 2 bar)	C
3/8"	3	5 to 60 psig (0.3 to 4 bar)	F
		5 to 150 psig (0.3 to 10 bar)	M
		10 to 250 psig (0.7 to 17 bar)**	S
Threads	Substitute	Diaphragm	Substitute
PTF	A	Relieving	R
ISO Rc taper	B	Non relieving	N
ISO G parallel	G		
		Adjustment	Substitute
		Knob	K
		T-bar	T

* Outlet pressure can be adjusted to pressures in excess of, and less than, those specified. Do not use these units to control pressures outside of the specified ranges.

** Units with 250 psig (17 bar) outlet pressure range are available only with the T-bar adjustment. Substitute "T" in the 7th position and "S" in the 9th position.

ISO Symbols

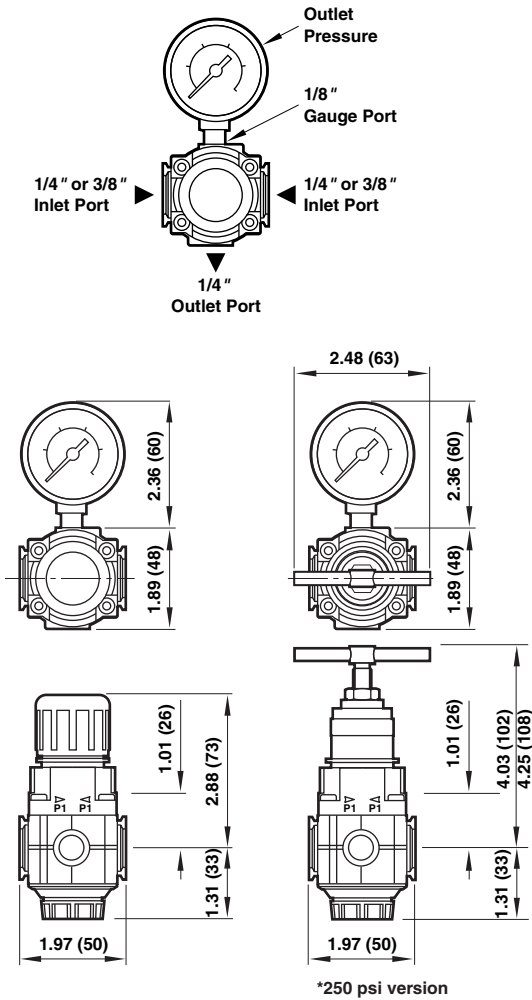


R72M Excelon® 72 Manifold Regulator

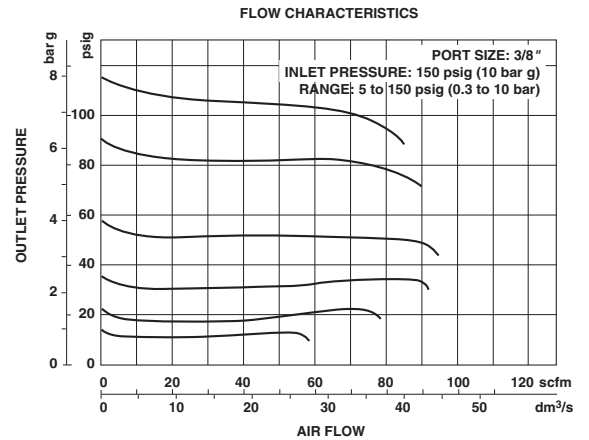
1/4", 3/8" Port Sizes

Dimensions in inches (mm)

Panel mounting hole diameter: 1.57" (40 mm)
Maximum panel thickness: 0.16" (4 mm)



Typical Performance Characteristics



Service Kits

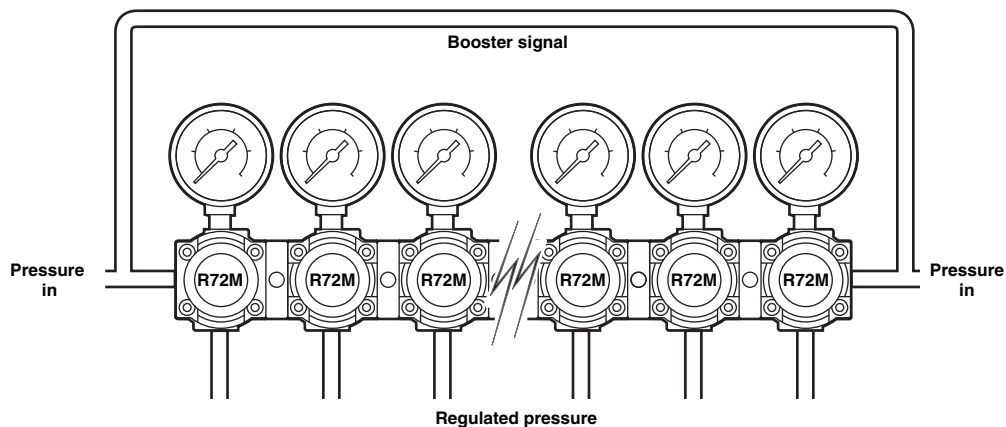
Item	Type	Part Number
Service kit	Relieving	4381-500
	Non relieving	4381-501

Service kit includes diaphragm assembly, valve assembly, valve spring and o-rings.

Accessories

Item	Type	Part Number
Quik clamp	w/o bracket	4214-51
	w/ bracket	4214-52

Typical Manifold Regulator Application



R30M Series Manifold Regulator

8 mm and 10 mm Port Sizes

Push-in fittings in ports. No need for threaded connectors and fittings

Integral base mounting

Water or compressed air only

Technical data

Fluid:

Compressed air or water

Maximum pressure:

150 psig (10 bar)

Operating temperature*:

23° to 104°F (-5° to 40°C)

* Air supply must be dry enough to avoid ice formation at temperatures below 35°F (2°C).

Gauge port:

(can be used as additional outlet port) 10 mm OD tube with 10 mm OD tube main

ports: 8 mm OD tube with 8 mm OD tube main ports

Two inlet ports: 10 mm OD tube or 8 mm o/d tube

One outlet port: 10 mm OD tube with 10 mm OD tube inlet

8 mm OD tube with 8 mm OD tube inlet

Materials:

Body: Acetal

Bonnet: Acetal

Valve: Brass/nitrile

Elastomers: Nitrile

Valve seat: Acetal



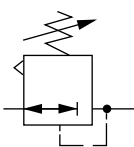
Ordering Information.

Models listed include 10 mm push-in fittings, knob adjustment, relieving diaphragm, 0 to 70 psig (0 to 4.8 bar) outlet pressure adjustment range* with gauge, with porting plug.

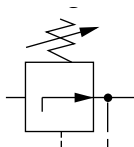
Port	Model	Flow† scfm (dm ³ /s)	Weight lb (kg)
8 mm	R30M 8DK RGG	17 (8)	0.22 (0.10)
10 mm	R30M ADK RGG	17 (8)	0.22 (0.10)

† Typical flow with 150 psig (10 bar) inlet pressure, 90 psig (6.3 bar) set pressure and a 15 psig (1 bar) droop from set.

ISO Symbols



Relieving



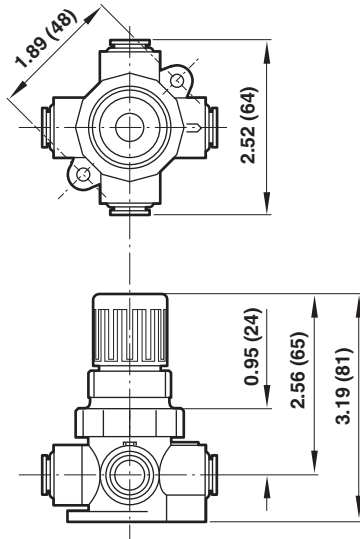
Non relieving

R30M Series Manifold Regulator

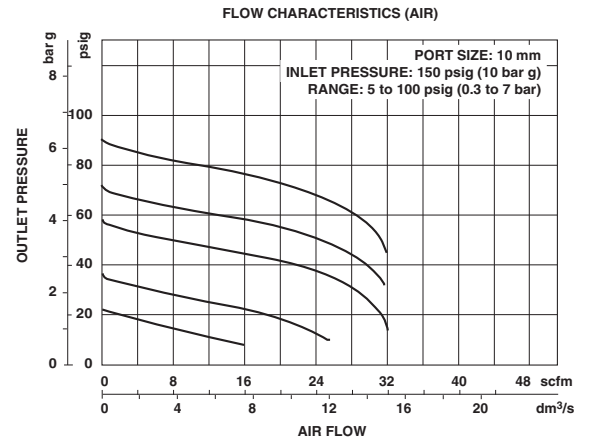
8 mm and 10 mm Port Sizes

Typical Performance Characteristics

Panel mounting hole diameter: 1.19" (30 mm)
 Maximum panel thickness: 0.25" (6 mm)



Dimensions in inches (mm)



Typical Manifold Regulator Application

