

Excelon® modular system

L72M/C, L73M/C, L74M/C Lubricators

Excelon® design allows in-line or modular installation

Quick release bayonet bowl.

Flow sensor provides a nearly constant oil/air ratio over a wide range of flows

Highly visible, prismatic liquid level indicator lens on metal bowls

All round (360°) visibility of sight-feed dome for ease of drip rate setting

Micro-fog and oil-fog

Technical data

Fluid:

Compressed air

Maximum pressure:

Transparent bowl: 150 psig (10 bar)

Metal bowl: 250 psig (17 bar)

Operating temperature*:

(72) -30° to 150°F (-34° to 66°C)

(73, 74) -30° to 175°F (-34° to 80°C)

*Air supply must be dry enough to avoid ice formation at temperatures below 35°F (2°C).

Materials

L72

Body: zinc

Elastomers: nitrile

Transparent bowl: polycarbonate

Metal bowl: zinc

Liquid level indicator lens (metal bowl):

transparent nylon

Sight-feed dome: transparent nylon

Elastomers: neoprene, nitrile & Geolast

L73, L74

Body: aluminum

Transparent bowl: polycarbonate

Guarded transparent bowl: polycarbonate with aluminum guard

Metal bowl: aluminum

Liquid level indicator lens (metal bowl):

transparent nylon

Sight-feed dome: transparent nylon

Elastomers: neoprene & nitrile

Microfog: Fine mist lubrication with oil particle size typically less than 2µm. For use in lengthy air lines or multiple valve and cylinder circuits.

Oilfog: Suitable for heavy lubrication systems such as single cylinder air motors and air tools.



L72



L73



L74

Ordering Information

Models listed include PTF threads, manual drain, and metal bowl with plastic liquid level indicator.

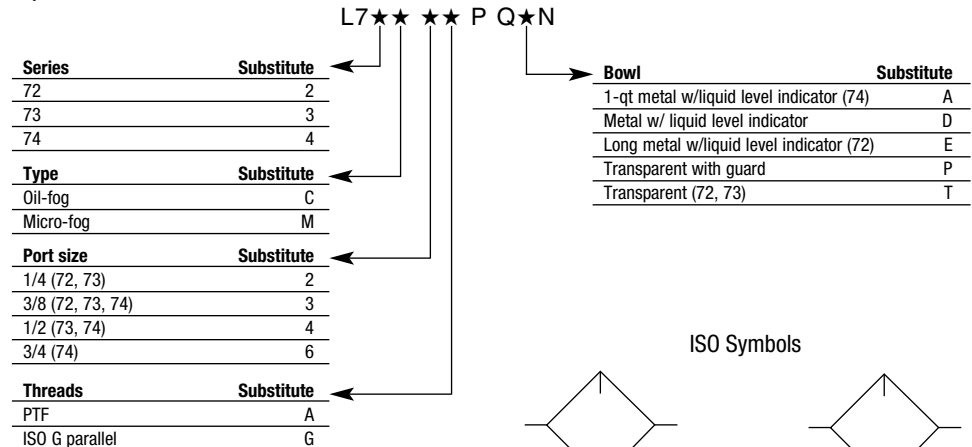
Type	Port Size	Model*	Flow** scfm (dm3/s)	Nominal bowl capacity (oz)	Weight lb (kg)†
Micro-Fog	1/4"	L72M 2AP QEN	51 (24)	2.2	1.1 (0.49)
Oil Fog	1/4"	L72C 2AP QEN	51 (24)	2.2	1.1 (0.49)
Micro Fog	3/8"	L73M 3AP QDN	60 (28)	3.5	1.1 (0.50)
Oil Fog	3/8"	L73C 3AP QDN	60 (28)	3.5	1.1 (0.50)
Micro Fog	3/8"	L74M 3AP QDN	114 (54)	7.0	1.70 (0.77)
Oil Fog	3/8"	L74C 3AP QDN	118 (56)	7.0	1.70 (0.77)
Micro Fog	1/2"	L74M 4AP QDN	154 (73)	7.0	1.61 (0.73)
Oil Fog	1/2"	L74C 4AP QDN	192 (91)	7.0	1.61 (0.73)

* Models listed in the order table must not be located downstream of frequently cycling directional control valves. Order the optional bi-directional Oil-Fog Lubricator for use under such conditions.

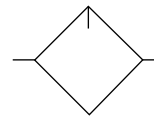
**Typical flow with 90 psig (6.3 bar) inlet pressure and a pressure drop of 7 psig (0.5 bar).

† (74) Lubricators with 1 quart (1 liter) metal bowl: Add 2.01 lbs (0.91 kg).

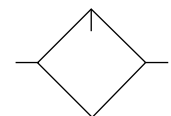
Options selector



ISO Symbols



No Drain



With Drain

Excelon® modular system

L72M/C, L73M/C, L74M/C Lubricators

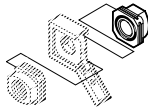
Dimensions in inches.

Accessories

Wall mounting bracket*



Pipe adapters (quantity of 1) (NPT)



Quikclamp®



Quikclamp® and wall bracket



Quick fill nipple

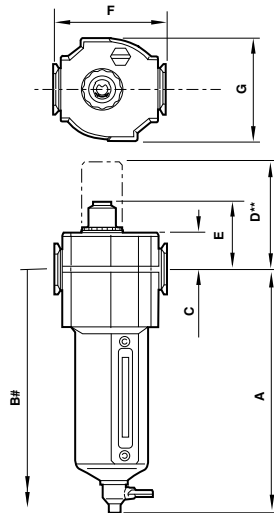
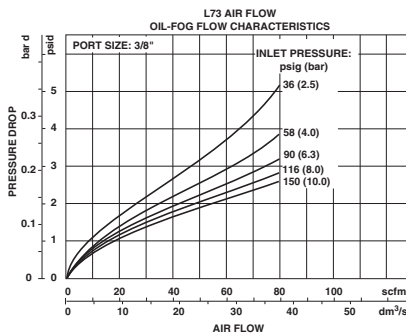
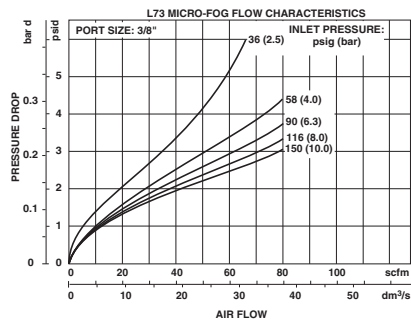
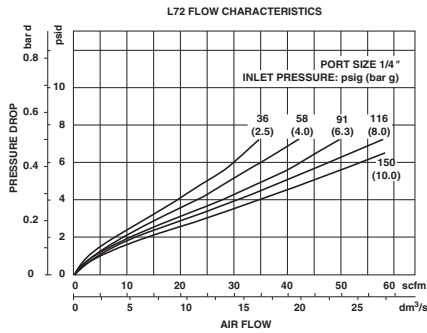


Service Kit Seal and gasket

L72	4224-50	4215-02 (1/4) 4215-03 (3/8)	4214-51	4214-52		4382-500 (72M/C)
L73	4424-50	4315-01 (1/4) 4315-02 (3/8) 4315-03 (1/2) 4315-04 (3/4)	4314-51	4314-52	18-011-024	4382-600 (73M/C)
L74	4324-50	4315-02 (3/8) 4315-03 (1/2) 4315-04 (3/4)	4314-51	4314-52 4314-55 (1-qt bowl)	18-011-024	4382-700 (74M/C)

* Bracket kit does not include wall mounting screws.

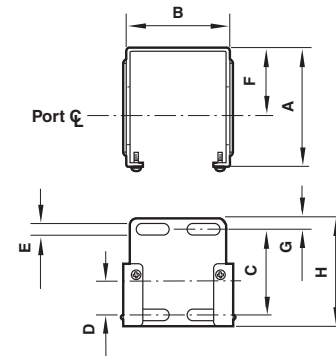
Typical Performance Characteristics



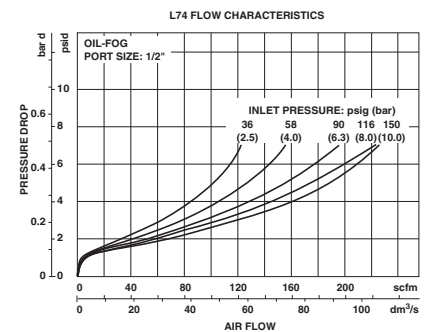
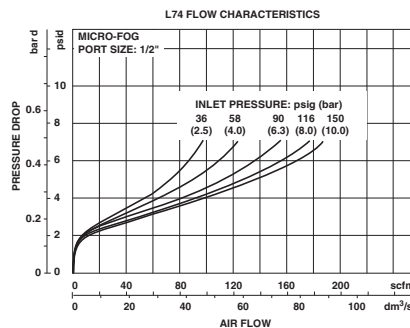
** Optional Pyrex sight-feed dome.
Minimum clearance required to remove bowl.

	A	B	C	D	E	F	G
72	5.83	9.13	0.75	2.52	1.61	1.97	1.89
73	6.15	10.04	0.98	2.76	1.85	2.68	2.44
74	6.95	10.87	0.98	2.68	1.85	3.15	2.91
	A	B	C	D	E	F	G
74 w/1 qt bowl closed bottom	11.14	20.0	0.98	2.68	1.85	3.15	2.91
74 w/1 qt bowl w/drain	11.93	20.0	0.98	2.68	1.85	3.15	2.91

Mounting bracket



Series	A	B	C	D	E	F	G	H
72	2.36	1.65	1.54	0.73	0.16	1.50	0.24	2.01
73	2.64	2.36	1.89	0.75	0.28	1.50	0.24	2.40
74	3.11	2.72	1.97	0.79	0.20	2.01	0.24	2.40



Excelon® Pro L92C Oil-Fog Lubricator

- Easy to order
- Configuration flexibility
- Excellent value
- No tools required for assembly
- RoHs compliant

Technical data

- Fluid: Compressed air
- Maximum pressure: Transparent bowl: 175 psig (12 bar)
- Operating temperature*: -4° to 125°F (-20° to 52°C)
- * Air supply must be dry enough to avoid ice formation at temperatures below 35°F (2°C).

Materials

- Body: PBT
- Transparent bowl: Polycarbonate
- Elastomers:
 - Bowl and sight-feed dome O-ring - Neoprene
 - All others - nitrile
- Sight-feed dome: Transparent nylon
- Recommended lubricant: DTE Light



Order Information

Model listed below includes oil-fog lubrication, closed bottom bowl, and sight feed dome.

Port Size	Part Number	Flow* scfm (dm3/s)	Weight lbs (kg)
1/4" PTF	L92C2APETN	50 (24)	0.42 (.19)

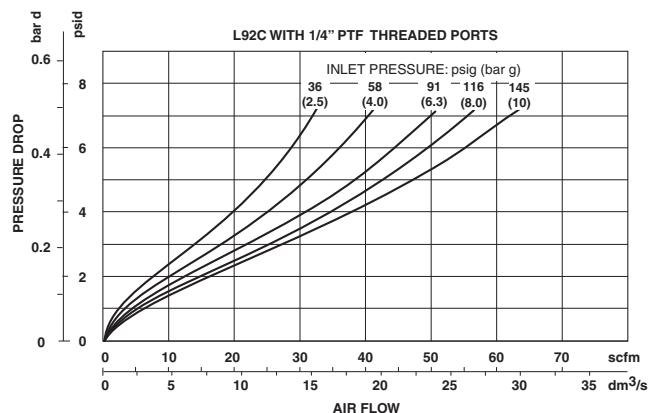
*Typical flow with 90 psig (6.3 bar) inlet pressure and a pressure drop of 7 psig (0.5 bar)

L92C★★PETN

Substitute	Description
NN	no connection
1A	1/8" PTF
2A	1/4" PTF
3A	3/8" PTF
1B	1/8" ISO Rc
2B	1/4" ISO Rc
3B	3/8" ISO Rc
1G	1/8" ISO G
2G	1/4" ISO G
3G	3/8" ISO G
6D	6mm PIF
8D	8mm (5/16") PIF
AD	10mm PIF
BD	12mm PIF
4E	1/4" PIF
6E	3/8" PIF
8E	1/2" PIF
2R*	1/4" PTF
2T*	1/4" ISO Rc
2V*	1/4" ISO G

* Does not include mounting bracket

Flow Characteristics



All Dimensions in Inches (mm)

Excelon® Pro Modular System

L92C, Oil-Fog Lubricator

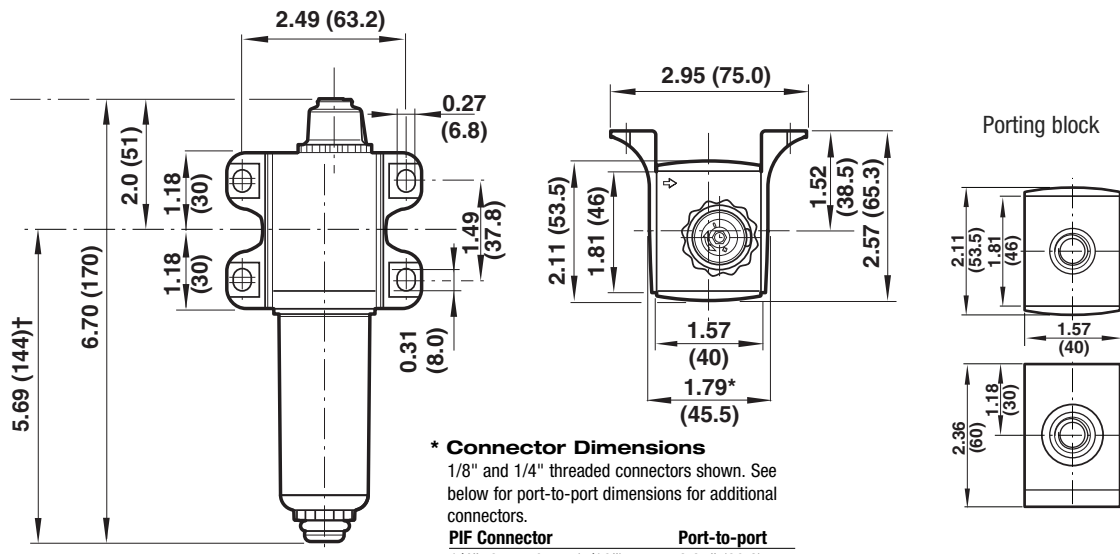
Accessories and Kits

Threaded connector w/mounting bracket*		Push-In-Fitting connector w/mounting bracket*		Threaded connector w/o mounting brackets		Porting block		Quikconnect (quantity of 1)
Connection	P/N	Connection	P/N	Connection	P/N	Connection	P/N	P/N
1/8" PTF	9212KIT-1A	6mm PIF	9213KIT-6D	1/4" PTF	9211KIT-2R	1/4" PTF	9216-50	9210-50
1/4" PTF	9212KIT-2A	8mm (5/16") PIF	9213KIT-8D	1/4" ISO Rc	9211KIT-2T	1/4" ISO G	9216-51	
3/8" PTF	9212KIT-3A	10mm PIF	9213KIT-AD	1/4" ISO G	9211KIT-2V	1/4" ISO Rc	9216-52	
1/8" ISO Rc	9212KIT-1B	12mm PIF	9213KIT-BD					
1/4" ISO Rc	9212KIT-2B	1/4" PIF	9213KIT-4E					
3/8" ISO Rc	9212KIT-3B	3/8" PIF	9213KIT-6E					
1/8" ISO G	9212KIT-1G	1/2" PIF	9213KIT-8E					
1/4" ISO G	9212KIT-2G							
3/8" ISO G	9212KIT-3G							

* Use 1/4" (6 mm) screws and appropriate washers when attaching brackets to a surface.

Service kit with bowl O-ring, feed dome seal P/N L92C-KIT	Locking plate kits**	
	 9236-88/X10 (qty 10) (fits filter, lubricator, lockout and back of all units)	 9236-89/X10 (qty 10) (fits regulator, filter/regulator, porting block)

** Locking plates **MUST** be in place before pressurizing any Excelon Pro unit.



* **Connector Dimensions**
 1/8" and 1/4" threaded connectors shown. See below for port-to-port dimensions for additional connectors.

PIF Connector	Port-to-port
1/4", 6mm, 8mm (5/16")	2.37" (60.2)
3/8", 1/2", 10mm, 12mm	2.48" (61.9)
Threaded connector	
1/8", 1/4"	1.79" (45.5)
3/8"	2.99" (76.1)

† Distance required to remove bowl.