

DEMAND MORE FLEXIBILITY WITH NORGREN'S

Excelon **Pro** Design Advantage

» Design flexibility

Excelon **Pro's** ease of assembly allows last minute changes in product configuration.

» Aesthetic appearance

Excelon **Pro** units have a contemporary, modern appearance designed to enhance any product or application.

» Small Footprint

The compact unit size coupled with integrated fitting connections make the Excelon **Pro** the most compact unit in its class.

» Ease of Installation

Innovative patent pending connection design combined with integral mounting brackets make the Excelon **Pro** user friendly and easy to install.

» Integrated fittings

Integrated fittings reduce installation time, minimize leak paths, and reduce overall footprint dimensions. Offered in 1/4", 3/8", 1/2", 6 mm, 8 mm, 10 mm and 12 mm sizes.

» Flow performance

Patent pending valve provides breakthrough flow capacity. Maximum flow for such a compact product.



Excelon® Filter/Regulator-Lubricator Boxed Sets

B72/L72, B73/L73, B74/L74

Boxed sets are an excellent and attractive marketing tool for counter displays.

True modularity with Norgren Quikclamp® connections

Quick release bayonet bowl

Lubricator flow sensor provides a nearly constant oil/air ratio over a wide range of air flows

All around (360°) visibility of the lubricator sight-feed dome simplifies installation and adjustment

Regulator balanced valve minimizes effect of variation in the inlet pressure on the outlet pressure

Technical data

Fluid:

Compressed air

Maximum pressure:

Transparent bowl: 150 psig (10 bar)

Metal bowl (manual or semi automatic drain): 250 psig (17 bar)

(72) 150 psig (10 bar)

Operating temperature*:

Transparent bowl:

0° to 125°F (-20° to 50°C)

Metal bowl:

0° to 150°F (-20° to 65°C)

* Air supply must be dry enough to avoid ice formation at temperatures below 35°F (2°C).

Particle removal:

5 µm, 25 µm, or 40 µm filter element

Materials

Body: zinc or aluminum

Bonnet: acetal or aluminum

Bowl:

Metal bowl: (72) polycarbonate
(73, 74) aluminum

Metal bowl liquid level indicator lens: transparent nylon

Sight-feed dome: transparent nylon

Element: sintered polypropylene

Elastomers: neoprene, nitrile



Boxed sets



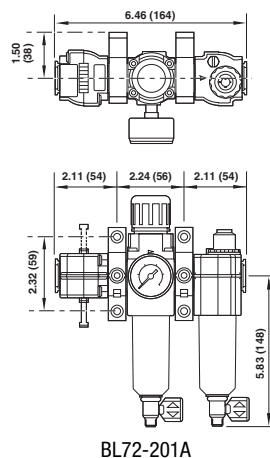
BL72-201A

Ordering information

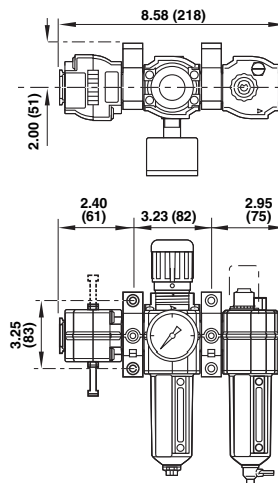
Models include PTF threads. Filter/Regulator (F/R) has knob adjustment, automatic drain, metal bowl with level indicator, 40 µm element, relieving diaphragm, and 150 psig (10 bar) regulating spring, and gauge. Lubricator (L) is a Micro-Fog model with 1/4 turn manual drain and metal bowl with level indicator. Shut off valve is included.

Boxed Set Combination Units (ship within 24 hours)

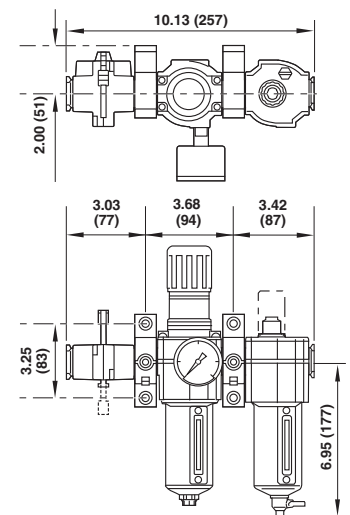
Boxed Set	Port size	Model
Filter/Regulator-Lubricator-Lockout valve-gauge-brackets	1/4"	BL72-201A
Filter/Regulator-Lubricator-Lockout valve-gauge-brackets	3/8"	BL73-301A
Filter/Regulator-Lubricator-Lockout valve-gauge-brackets	1/2"	BL74-401A



BL72-201A



BL73-301A



BL74-401A

Dimensions in inches (mm).

Other combinations are available. Please consult Norgren for more information.

Excelon® Modular System

F72G, F73G, F74G General Purpose Filters

Excelon® design allows in-line or modular installation with other Excelon® products

Quick release bayonet bowl

Highly visible prismatic liquid level indicator lens on metal bowls

Technical data

Fluid: Compressed air

Operating pressure:

Transparent bowl: 150 psig (10 bar)

Metal bowl: 250 psig (17 bar)

F72G w/metal bowl and automatic drain: 150 psig (10 bar)

Operating temperature*:

Transparent bowl: -30° to 125°F (-34° to 50°C)

Metal bowl:

(72) -30° to 150°F (-34° to 66°C)

(73, 74) -30° to 175°F (-34° to 80°C)

* Air supply must be dry enough to avoid ice formation at temperatures below 35°F (2°C).

Materials

F72G

Body: zinc

Transparent bowl: polycarbonate

Metal bowl: zinc

Metal bowl liquid level indicator lens: transparent nylon

Element: sintered polypropylene

Elastomers: neoprene and nitrile

F73G & F74G:

Body: aluminum

Transparent bowl: polycarbonate

Transparent with guard: polycarbonate, aluminum guard

Metal bowl: aluminum

Metal bowl liquid level indicator lens: transparent nylon

Element: sintered polypropylene

Elastomers: Neoprene and nitrile



Ordering information

Models listed include PTF threads, automatic drain, metal bowl with liquid level indicator, and a 40 µm element.

Port Size	Model	Flow† scfm (dm ³ /s)	Weight lb (kg)
1/4"	F72G 2AN AE3	55 (26)	1.15 (0.52)
3/8"	F73G 3AN AD3	65 (31)	1.1 (0.50)
1/2"	F74G 4AN AD3	140 (66)	1.79 (0.81)
3/4"	F74G 6AN AD3	140 (66)	1.75 (0.79)

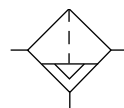
† Typical flow with a 40µm element at 90 psig (6.3 bar) inlet pressure and 5 psig (0.35 bar) pressure drop.

Options selector

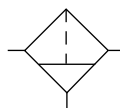
Series	Substitute	Element	Substitute
72	2	5 µm	1
73	3	40 µm	3
74	4		
Port size	Substitute	Bowl	Substitute
1/4 (72, 73)	2	Metal w/ liquid level indicator (72, 73, 74)	D
3/8 (72, 73, 74)	3	Long metal w/ liquid level indicator (72)*	E
1/2 (73, 74)	4	Long transparent (72)*	L
3/4 (74)	6	Transparent with guard (73, 74)	P
		Transparent bowl (72, 73)	T
Threads	Substitute	Drain	Substitute
PTF	A	1/4 turn manual	Q
ISO G parallel	G	Auto drain*	A
Service life indicator	Substitute		
Mechanical indicator	D		
Electrical indicator	E		
Without	N		

* 72 Series auto drain is available only with long bowl option.

ISO Symbols



Auto Drain



Manual Drain

Excelon® Modular System

F72G, F73G, F74G General Purpose Filters

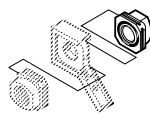
Dimensions in inches

Accessories

Wall mounting bracket*



Quikmount pipe adapters (quantity of 1) (NPT)



Quikclamp†



Quikclamp® and wall bracket



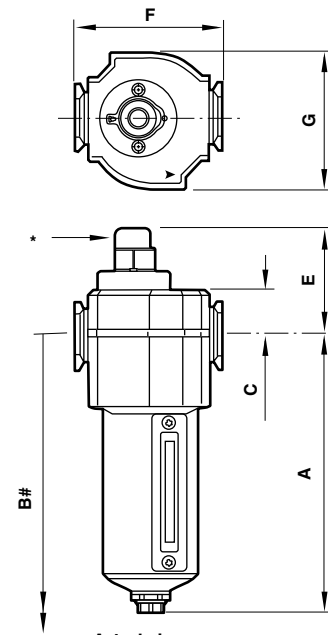
Service kit Seal and gasket

Replacement elements

Series	Wall mounting bracket*	Quikmount pipe adapters (quantity of 1) (NPT)	Quikclamp†	Quikclamp® and wall bracket	Service kit Seal and gasket	Replacement elements
F72G	4224-50	4215-02 (1/4)	4214-51	4214-52	4380-500	5925-03 (5µm)
		4215-03 (3/8)				5925-02 (40µm)
		4315-01 (1/4)				4438-01 (5µm)
F73G	4424-50	4315-02 (3/8)	4314-51	4314-52	4380-600	4438-03 (40µm)
		4315-03 (1/2)				
		4315-04 (3/4)				
F74G	4324-50	4315-02 (3/8)	4314-51	4314-52	4380-700	4338-04 (5µm)
		4315-03 (1/2)				4338-05 (40µm)
		4315-04 (3/4)				

* Bracket kit does not include wall mounting screws.

† Quikclamp is patented (US patent 5372392) and foreign patents.



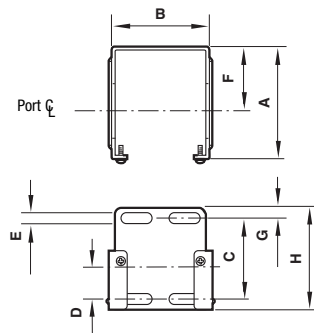
Auto drain

* Optional service indicator

Minimum clearance required to remove bowl

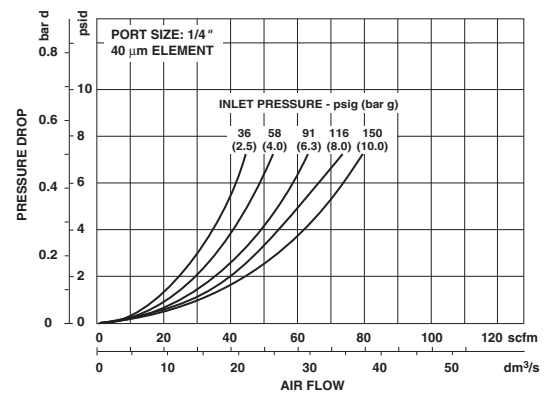
Series	Drain type	A	B	C	E	F	G
72	Auto	5.51	7.52	0.75	2.09	1.97	1.89
	Manual	5.83	7.83	0.75	2.09	1.97	1.89
73	Auto	5.80	8.15	0.98	2.36	2.68	2.44
	Manual	6.15	8.50	0.98	2.36	2.68	2.44
74	Auto	6.35	9.06	0.98	2.36	3.15	2.91
	Manual	6.95	9.69	0.98	2.36	3.15	2.91

Mounting bracket

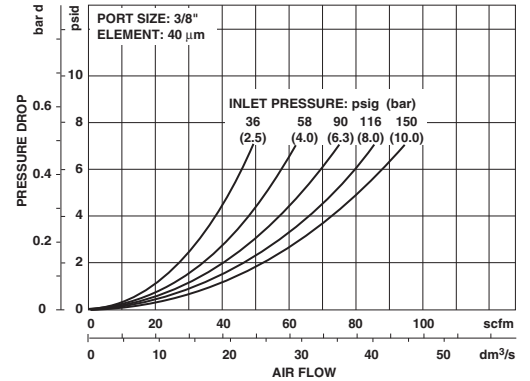


Series	A	B	C	D	E	F	G	H
72	2.36	1.65	1.54	0.73	0.16	1.50	0.24	2.01
73	2.64	2.36	1.89	0.75	0.28	1.50	0.24	2.40
74	3.11	2.72	1.97	0.79	0.20	2.01	0.24	2.40

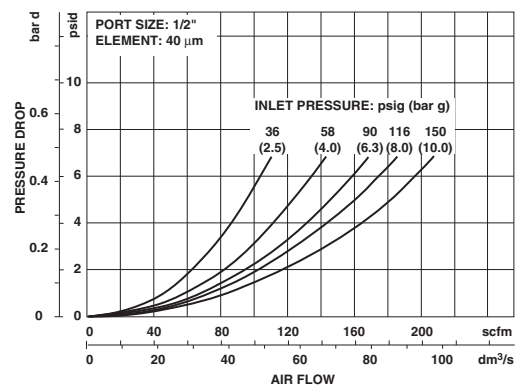
F72G FLOW CHARACTERISTICS



F73G FLOW CHARACTERISTICS



F74G FLOW CHARACTERISTICS



Excelon® Pro F92G General Purpose Filter

- Easy to order
- Configuration flexibility
- Excellent value
- No tools required for assembly
- RoHs compliant

Technical data

Fluid: Compressed air
 Maximum pressure
 Manual drain: 175 psig (12 bar)
 Automatic drain: 150 psig (10 bar)
 Operating temperature*
 -4° to 125°F (-20° to 52°C)
 * Air supply must be dry enough to avoid ice formation at temperatures below 35°F (2°C).

Materials

Body: PBT
 Transparent bowl: Polycarbonate
 Element: Sintered polypropylene
 Elastomers:
 Bowl O-ring - Neoprene
 All others - nitrile
 Automatic drain operating conditions (float operated):
 Bowl pressure required to close drain: > than 5 psig (0.35 bar)
 Bowl pressure required to open drain: < than 3 psig (0.2 bar)
 Minimum air flow required to close drain: 0.2 scfm (0.1 dm³/s)
 Manual operation: Depress pin inside drain outlet to drain bowl



Order Information

Model listed below includes 5µm element, and manual drain.

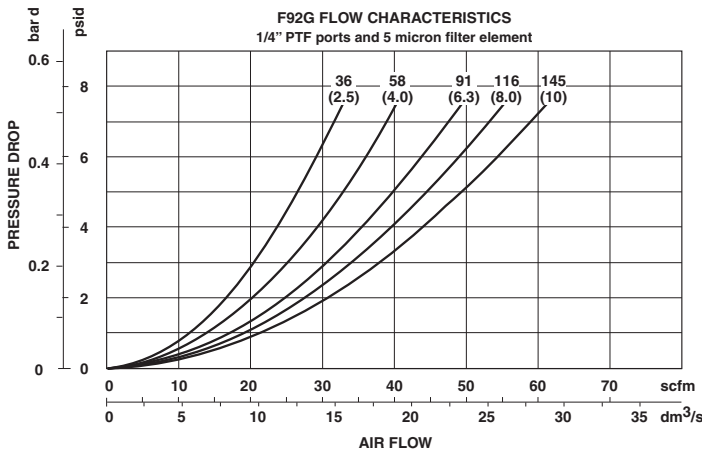
Port size	Part Number	Drain	Flow* scfm (dm³/s)	Weight lb (kg)
1/4" PTF	F92G2ANQT1	Manual	40 (19)	0.40 (0.18)

*Typical flow at 90 psig (6.3 bar) inlet pressure, and 5 psig (0.35 bar) pressure drop.

F92G★N★T1

Substitute	Description	Substitute	Description
NN	no connection	A	Automatic drain
1A	1/8" PTF	Q	Manual drain
2A	1/4" PTF		
3A	3/8" PTF		
1B	1/8" ISO Rc		
2B	1/4" ISO Rc		
3B	3/8" ISO Rc		
1G	1/8" ISO G		
2G	1/4" ISO G		
3G	3/8" ISO G		
6D	6mm PIF		
8D	8mm (5/16") PIF		
AD	10mm PIF		
BD	12mm PIF		
4E	1/4" PIF		
6E	3/8" PIF		
8E	1/2" PIF		
2R*	1/4" PTF		
2T*	1/4" ISO Rc		
2V*	1/4" ISO G		

* Does not include mounting bracket.



Excelon® Pro Modular System

F92G, General Purpose Filters

All Dimensions in Inches (mm)

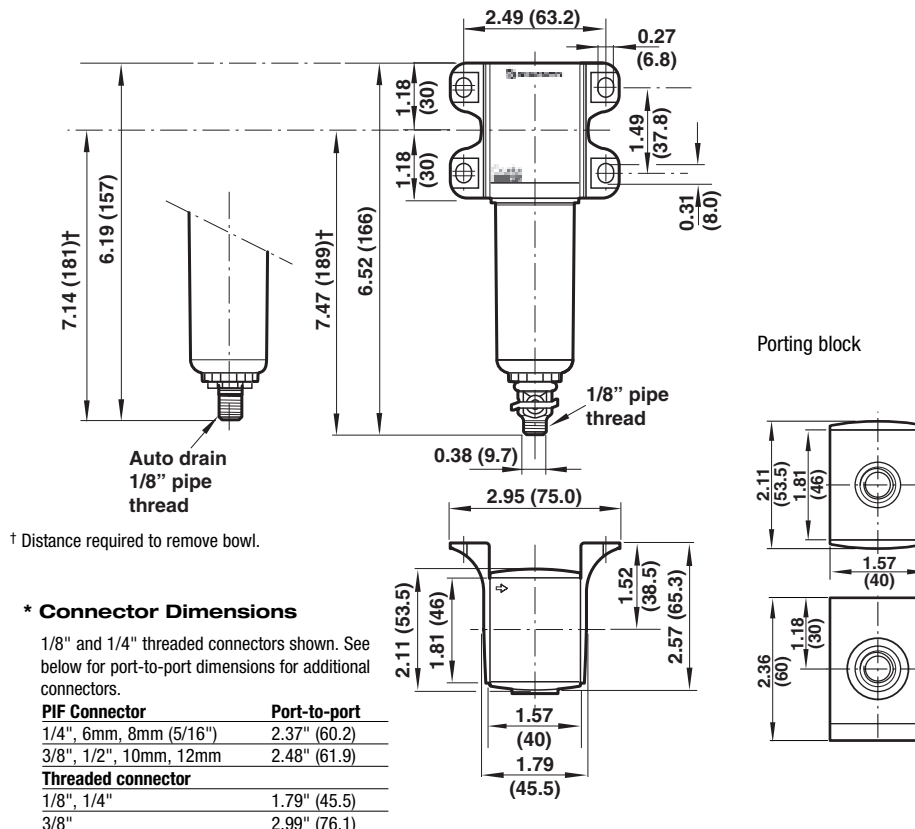
Accessories and Kits

Threaded connector w/mounting bracket*		Push-In-Fitting connector w/mounting bracket*		Threaded connector w/o mounting brackets		Porting block		Quikconnect (quantity of 1)
Connection	P/N	Connection	P/N	Connection	P/N	Connection	P/N	P/N
1/8" PTF	9212KIT-1A	6mm PIF	9213KIT-6D	1/4" PTF	9211KIT-2R	1/4" PTF	9216-50	9210-50
1/4" PTF	9212KIT-2A	8mm (5/16") PIF	9213KIT-8D	1/4" ISO Rc	9211KIT-2T	1/4" ISO G	9216-51	
3/8" PTF	9212KIT-3A	10mm PIF	9213KIT-AD	1/4" ISO G	9211KIT-2V	1/4" ISO Rc	9216-52	
1/8" ISO Rc	9212KIT-1B	12mm PIF	9213KIT-BD					
1/4" ISO Rc	9212KIT-2B	1/4" PIF	9213KIT-4E					
3/8" ISO Rc	9212KIT-3B	3/8" PIF	9213KIT-6E					
1/8" ISO G	9212KIT-1G	1/2" PIF	9213KIT-8E					
1/4" ISO G	9212KIT-2G							
3/8" ISO G	9212KIT-3G							

* Use 1/4" (6 mm) screws and appropriate washers when attaching brackets to a surface.

Service kit P/N F92G-KIT Includes: bowl O-ring, filter element, louver	Locking plate kits**	
Auto Drain Assembly kit P/N 4000-50	P/N 9236-88/X10 (qty 10) (fits filter, lubricator, lockout and back of all units)	P/N 9236-89/X10 (qty 10) (fits regulator, filter/regulator, porting block)

** Locking plates **MUST** be in place before pressurizing any Excelon Pro unit.



AIR LINE EQUIPMENT

Excelon® Modular System

F72C, F73C, F74C, F74H Oil Removal (Coalescing) Filters

Excelon® design allows in-line or modular installation

High efficiency oil and particle removal

Quick release bayonet bowl

Standard visual service life indicator turns from green to red when the filter element needs to be replaced

Technical data

Fluid:

Compressed air

Maximum pressure:

Transparent bowl w/manual drain:
150 psig (10 bar)

F72C metal bowl w/auto drain :
116 psig (8 bar)

Metal bowl w/manual drain:
250 psig (17 bar)

Automatic drain: 116 psig (8 bar)

Operating temperature*:

Transparent bowl:
-30° to 125°F (-34° to 50°C)

Metal bowl:
-30° to 150°F (-34° to 65°C)

* Air supply must be dry enough to avoid ice formation at temperatures below 35°F (2°C).

Oil removal: 0.01 µm at 70°F (21°C)

Remaining oil content: 0.01 mg/m³ at 70°F (21°C)

Materials

F72C

Body: zinc

Bowl transparent: polycarbonate

Metal: zinc

Metal bowl liquid level indicator lens:

Transparent nylon

Element: synthetic fiber and polyurethane foam

Elastomers: neoprene and nitrile

Service life indicator materials-Body: transparent nylon.

Internal parts: acetal.

Spring: stainless steel.

Elastomers: nitrile

F73C and F74C

Body: aluminum

Transparent bowl: polycarbonate

Transparent with guard: polycarbonate,

Guard: aluminum

Metal bowl: aluminum

Metal bowl liquid level indicator lens:

Transparent nylon

Element: synthetic fiber and polyurethane foam

Elastomers: neoprene and nitrile

Mechanical service indicator materials

Body: transparent nylon

Internal parts: Acetal

Spring: Stainless steel

Elastomers: Nitrile



F72C

F73C

F74C

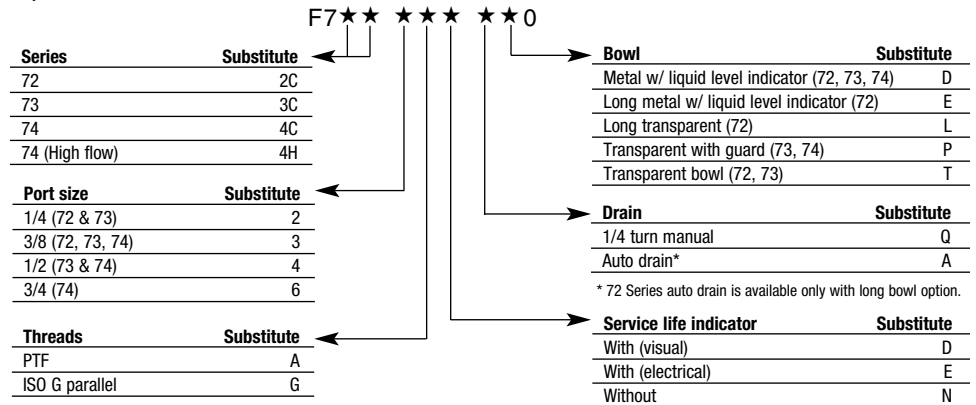
Ordering Information

Models listed include PTF threads, service indicator, automatic drain, and a metal bowl with liquid level indicator.

Port Size	Model Number	Maximum Flow* scfm (dm3/s)	Weight lb (kg)
1/4"	F72C 2AD AEO	9.5 (4.5)	1.2 (0.54)
3/8"	F73C 3AD ADO	21.2 (10.0)	1.2 (0.54)
1/2"	F74C 4AD ADO(std)	33.9 (16.0)	1.84 (0.83)
1/2"	F74H 4AD ADO (hi)	59.3 (28.0)	2.45 (1.11)
3/4"	F74H 6AD ADO (hi)	59.3 (28.0)	2.40 (1.10)

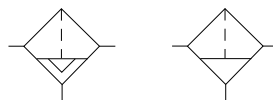
* Maximum flow with 90 psig (6.3 bar) inlet pressure to maintain stated oil removal performance.

Options selector



NOTE: Coalescing filters should be used in conjunction with a 5µm general purpose filter upstream to maximize filter element life and optimize performance.

ISO Symbols



Automatic and Semi Automatic Drain

Manual Drain

Excelon® Modular System

F72C, F73C, F74C, F74H Oil Removal (Coalescing) Filters

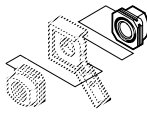
Dimensions in inches.

Accessories

Wall mounting bracket*



Quikmount pipe adapters (quantity of 1) (NPT)



Quikclamp®†



Quikclamp® and wall bracket



Visual service indicator



Electrical service life indicator



Service kit Seal and gasket



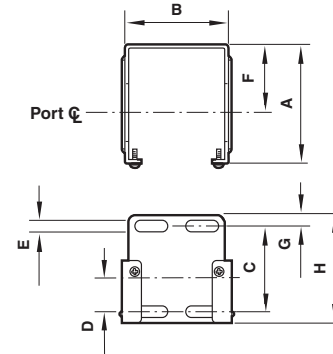
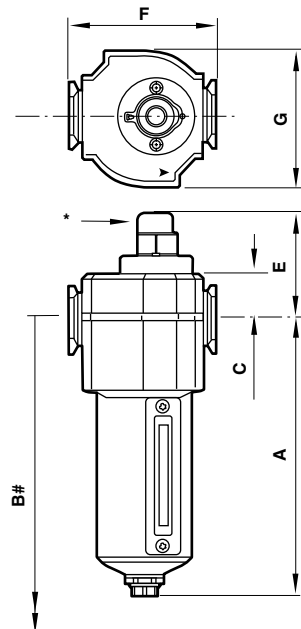
Replacement elements

	Wall mounting bracket*	Quikmount pipe adapters (quantity of 1) (NPT)	Quikclamp®†	Quikclamp® and wall bracket	Visual service indicator	Electrical service life indicator	Service kit Seal and gasket	Replacement elements
F72C	4224-50	4215-02 (1/4) 4215-03 (3/8)	4214-51	4214-52			4380-500	5925-09
F73C	4424-50	4315-01 (1/4) 4315-02 (3/8) 4315-03 (1/2) 4315-04 (3/4)	4314-51	4314-52	5797-50	4020-51R	4380-602	4444-01
F74C, F74H	4324-50	4315-02 (3/8) 4315-03 (1/2) 4315-04 (3/4)	4314-51	4314-52	5797-50	4020-51R	4380-730 4344-02 (F74H)	4344-01 (F74C)

* Bracket kit does not include wall mounting screws.

† Quikclamp is patented (US patent 5372392) and foreign patents.

Mounting bracket



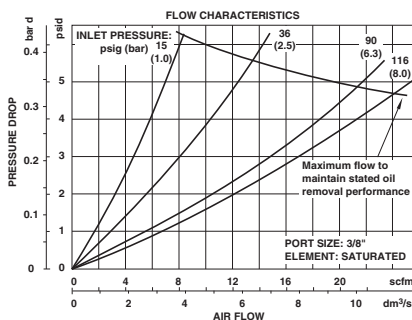
Series	A	B	C	D	E	F	G	H
72	2.36	1.65	1.54	0.73	0.16	1.50	0.24	2.01
73	2.64	2.36	1.89	0.75	0.28	1.50	0.24	2.40
74	3.11	2.72	1.97	0.79	0.20	2.01	0.24	2.40

Series	Drain type	A	B	C	E	F	G
F72C	Auto	5.51	7.52	0.75	2.09	1.97	1.89
	Manual	5.83	7.83	0.75	2.09	1.97	1.89
F73C	Auto	5.80	8.15	0.98	2.36	2.68	2.44
	Manual	6.15	8.50	0.98	2.36	2.68	2.44
F74C	Auto	6.35	9.17	0.98	2.36	3.15	2.91
	Manual	6.95	9.80	0.98	2.36	3.15	2.91
F74H	Auto	8.44	11.18	0.98	2.36	3.15	2.91
	Manual	9.04	11.81	0.98	2.36	3.15	2.91

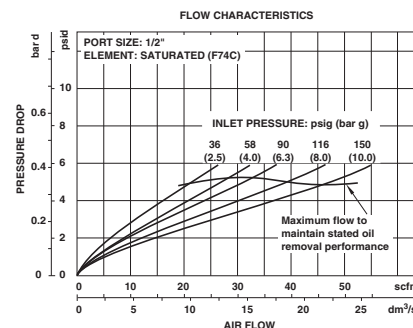
* Standard service indicator

Minimum clearance required to remove bowl

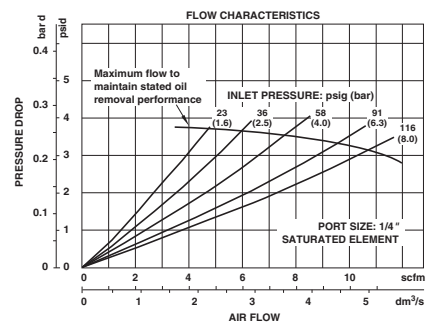
F73



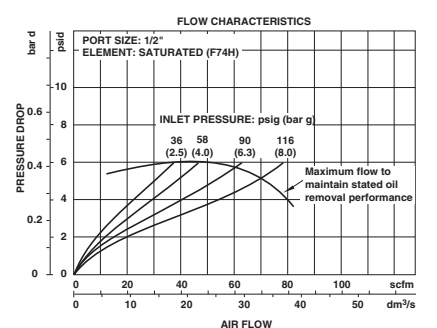
F74C



F72



F74H



Excelon® Pro F92C Coalescing Filter

- Easy to order
- Configuration flexibility
- Excellent value
- No tools required for assembly
- RoHS compliant

Technical data

Fluid: Compressed air
 Maximum pressure
 Automatic drain: 116 psig (8 bar)
 Operating temperature*
 -4° to 125°F (-20° to 52°C)
 * Air supply must be dry enough to avoid ice formation at temperatures below 35°F (2°C).

Materials

Body: PBT
 Transparent bowl: Polycarbonate
 Element: Synthetic fiber and polyurethane foam
 Elastomers: Bowl O-ring, and service life indicator
 O-ring - Neoprene. All others - nitrile
 Service Indicator
 Body: Polycarbonate
 Internal parts: Acetal
 Spring: Music wire ASTM 228
 Elastomer: Neoprene
 Automatic drain operating conditions (float operated):
 Bowl pressure required to close drain: > than 5 psig (0.35 bar)
 Bowl pressure required to open drain: < than 3 psig (0.2 bar)
 Minimum air flow required to close drain: 0.2 scfm (0.1 dm³/s)
 Manual operation: Depress pin inside drain outlet to drain bowl



Order Information

Model listed below includes 0.01µm element, automatic drain, service life indicator

Port size	Part Number	Flow* scfm (dm3/s)	Weight lbs (kg)
1/4" PTF	F92C2ADAT0	9.7 (4.6)	.44 (.20)

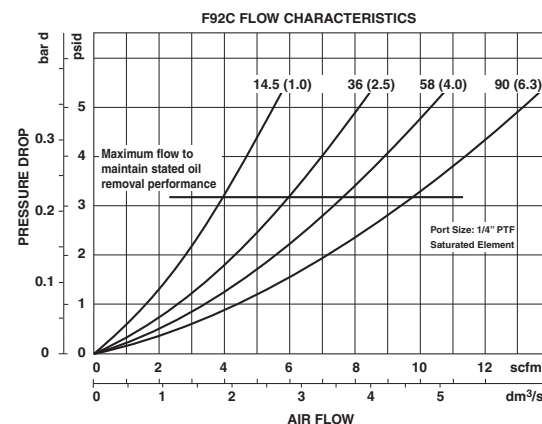
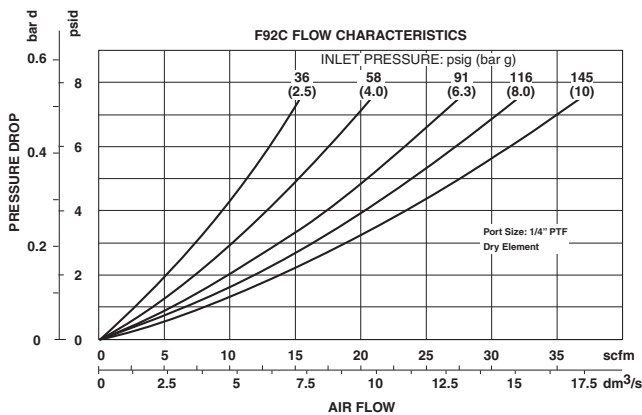
* Maximum flow with 90 psig (6.3 bar) inlet pressure to maintain stated oil removal performance (saturated element).

F92C ★★ DATO

Substitute	Description
NN	no connection
1A	1/8" PTF
2A	1/4" PTF
3A	3/8" PTF
1B	1/8" ISO Rc
2B	1/4" ISO Rc
3B	3/8" ISO Rc
1G	1/8" ISO G
2G	1/4" ISO G
3G	3/8" ISO G
6D	6mm PIF
8D	8mm (5/16") PIF
AD	10mm PIF
BD	12mm PIF
4E	1/4" PIF
6E	3/8" PIF
8E	1/2" PIF
2R*	1/4" PTF
2T*	1/4" ISO Rc
2V*	1/4" ISO G

* Does not include mounting bracket.

NOTE: Coalescing filters should be used in conjunction with a 5µm general purpose filter upstream to maximize filter element life and optimize performance.



All Dimensions in Inches (mm)

Excelon® Pro Modular System

F92C , Coalescing Filters

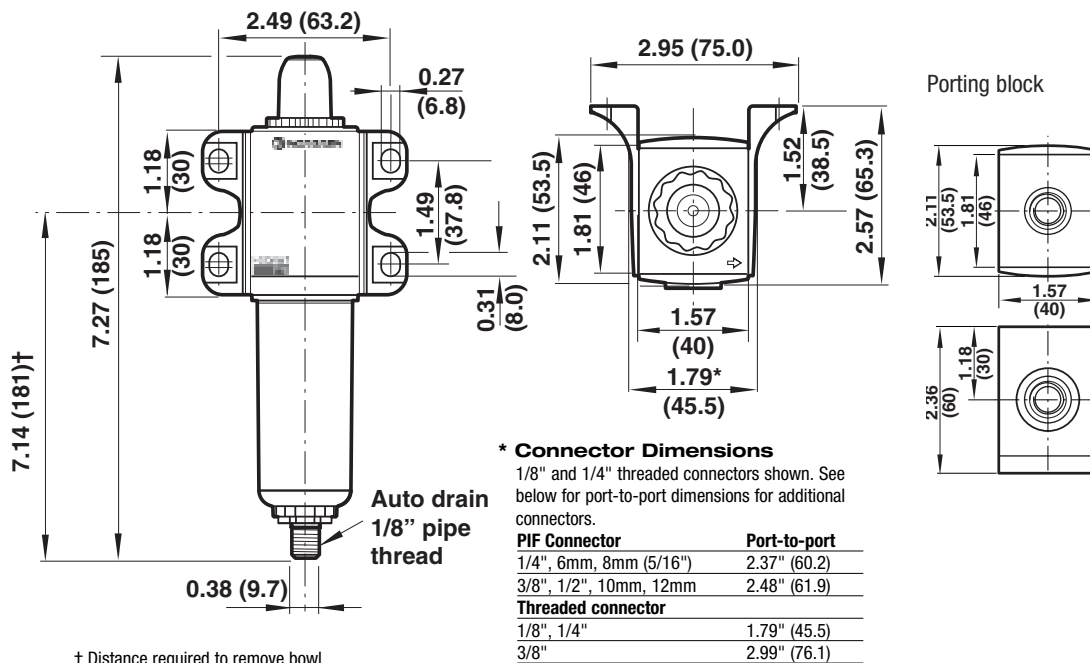
Accessories and Kits

Threaded connector w/mounting bracket*		Push-In-Fitting connector w/mounting bracket*		Threaded connector w/o mounting brackets		Porting block		Quikconnect (quantity of 1)
Connection	P/N	Connection	P/N	Connection	P/N	Connection	P/N	P/N
1/8" PTF	9212KIT-1A	6mm PIF	9213KIT-6D	1/4" PTF	9211KIT-2R	1/4" PTF	9216-50	9210-50
1/4" PTF	9212KIT-2A	8mm (5/16") PIF	9213KIT-8D	1/4" ISO Rc	9211KIT-2T	1/4" ISO G	9216-51	
3/8" PTF	9212KIT-3A	10mm PIF	9213KIT-AD	1/4" ISO G	9211KIT-2V	1/4" ISO Rc	9216-52	
1/8" ISO Rc	9212KIT-1B	12mm PIF	9213KIT-BD					
1/4" ISO Rc	9212KIT-2B	1/4" PIF	9213KIT-4E					
3/8" ISO Rc	9212KIT-3B	3/8" PIF	9213KIT-6E					
1/8" ISO G	9212KIT-1G	1/2" PIF	9213KIT-8E					
1/4" ISO G	9212KIT-2G							
3/8" ISO G	9212KIT-3G							

* Use 1/4" (6 mm) screws and appropriate washers when attaching brackets to a surface.

Service kit	Locking plate kits**	
P/N F92C-KIT Includes: bowl O-ring, service indicator seal, filter element, screws		
Auto drain assembly 4000-50	P/N 9236-88/X10 (qty 10) (fits filter, lubricator, lockout and back of all units)	P/N 9236-89/X10 (qty 10) (fits regulator, filter/regulator, porting block)

Locking plates **MUST be in place before pressurizing any Excelon Pro unit.



Excelon® Modular System

F72V, and F74V Oil Vapor Removal (adsorbing) Filters

Element color band changes to blue indicating need for replacement.

Excelon® design allows in-line or modular installation

Adsorbing type activated carbon element removes oil vapors and most hydrocarbon odors

Quick release bayonet bowl

Modular installations with Excelon® 72, 73, and 74 series can be made to suit particular applications



F72V



F74V

Technical data

Fluid:

Compressed air

Maximum pressure:

Transparent bowl: 150 psig (10 bar)

Metal bowl: 250 psig (17 bar)

Operating temperature*:

Transparent bowl:

0° to 125°F (-20° to 50°C)

Metal bowl:

0° to 150°F (-20° to 65°C)

* Air supply must be dry enough to avoid ice formation at temperatures below 35°F (2°C)

Air quality:

Within ISO 8573-1, Class 1 (oil content) when installed downstream of an oil removal filter.

Maximum remaining oil content in outlet air:

0.003 ppm at 70°F (20°C)

Materials

F72V

Body: zinc

Transparent bowl: polycarbonate

Guard for transparent bowl: zinc

Metal bowl: zinc

Element: Activated carbon and polycarbonate

Elastomers: nitrile

F74V

Body: aluminum

Transparent Bowl: polycarbonate with steel bowl guard

Metal bowl: aluminum

Element: activated carbon and aluminum

Elastomers: neoprene and nitrile

Ordering Information

Models listed include PTF threads.

Port Size	Model	Flow* scfm (dm3/s)	Weight lb (kg)
1/4"	F72V 2AN ELC	3.4 (1.6)	0.88 (0.40)
1/2"	F74V 4AN EMA	21 (10)	2.51 (1.14)
3/4"	F74V 6AN EMA	21 (10)	2.46 (1.12)

* Maximum flow with 90 psig (6.3 bar) inlet pressure to maintain stated oil removal performance.

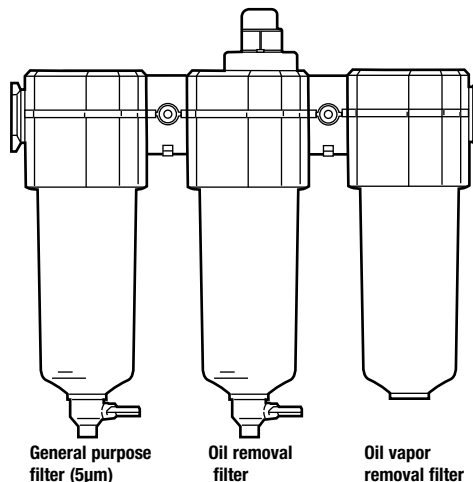
Options selector

Series	Substitute	Element	Substitute
72	2	Activated carbon (74)	A
74	4	Activated carbon (72)	C

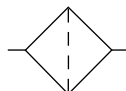
Port size	Substitute	Bowl	Substitute
1/4 (72)	2	Metal (72)	C
3/8 (72, 74)	3	Long transparent (72)	L
1/2 (74)	4	Metal (74)	M
3/4 (74)	6	Transparent with guard (74)	P

Threads	Substitute
PTF	A
ISO G parallel	G

Oil vapor removal filters must be protected upstream by an oil removal filter and general purpose filter.



ISO Symbol



Auto Drain

Excelon® Modular System

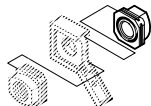
F72V and F74V Oil Vapor Removal (adsorbing) Filters

Accessories

Wall mounting bracket*



Quikmount pipe adapters (quantity of 1) (NPT)



Quikclamp®



Quikclamp® and wall bracket



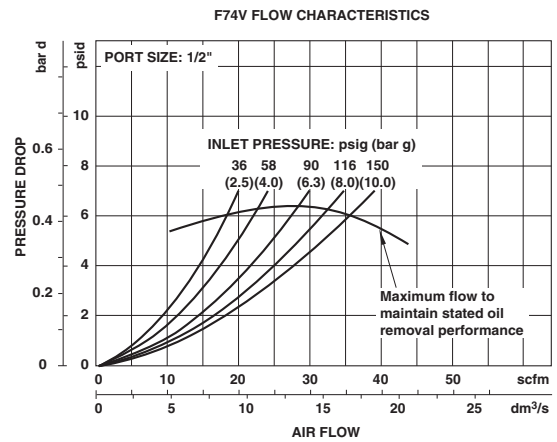
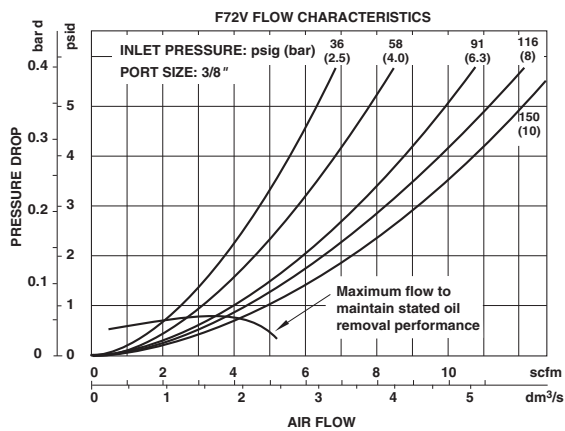
Service kit seal and gasket

Replacement elements

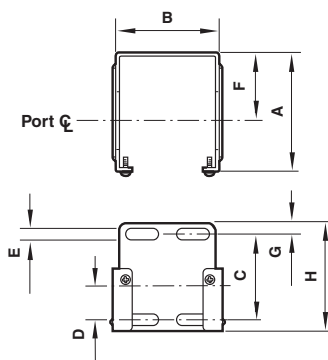
F72V	4224-50	4215-02 (1/4) 4215-03 (3/8)	4214-51	4214-52	4380-500	4241-01
F74V	4324-50	4315-02 (3/8) 4315-03 (1/2) 4315-04 (3/4)	4314-51	4314-52	4380-750	4341-01

* Bracket kit does not include wall mounting screws.

Typical Performance Characteristics



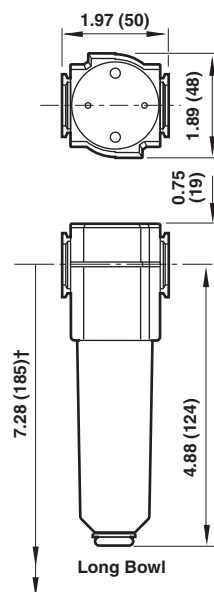
Mounting bracket



Series	A	B	C	D	E	F	G	H
72	2.36	1.65	1.54	0.73	0.16	1.50	0.24	2.01
74	3.11	2.72	1.97	0.79	0.20	2.01	0.24	2.40

All Dimensions in Inches (mm)

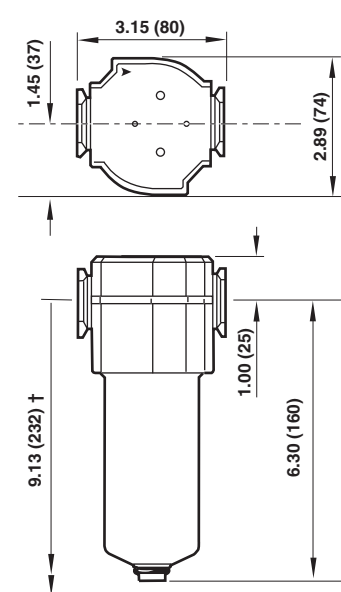
F72V



Long Bowl

† Minimum clearance required to remove bowl.

F74V



† Minimum clearance required to remove bowl.

Excelon® modular system

B72G, B73G, B74G Filter/Regulators

Excelon® design allows in-line installation or modular installation with other Excelon® products

High efficiency water and particle removal

Quick release bayonet bowl

Push to lock adjusting knob with tamper resistant accessory

Optional patented quarter turn manual drain

Technical data

Fluid:

Compressed air

Maximum pressure:

Transparent bowl: 150 psig (10 bar)

Metal bowl: 250 psig (17 bar)

B72G metal bowl w/ auto drain:
150 psig (10 bar)

Operating temperature*:

Transparent bowl:

-30° to 125°F (-34° to 50°C)

Metal bowl:

(72) -30° to 150°F (-34° to 66°C)

(73, 74) -30° to 175°F (-34° to 80°C)

* Air supply must be dry enough to avoid ice formation at temperatures below 35°F (2°C).

Materials

B72G

Body: zinc

Bonnet: acetal (Zinc on 250 psi model)

Valve: brass

Transparent bowl: polycarbonate

Metal bowl: zinc

Liquid level indicator lens (metal bowl):

transparent nylon

Element: sintered polypropylene

Elastomers: neoprene & nitrile

B73G & B74G:

Body & bonnet: aluminum

Transparent bowl: polycarbonate

Guarded transparent bowl:

polycarbonate with steel

Metal bowl: aluminum

Liquid level indicator lens (metal bowl):

transparent nylon (Pyrex optional)

Element: sintered polypropylene

Elastomers: neoprene & nitrile



B72G



B73G



B74G

Ordering Information

Models listed include PTF threads, knob adjustment, automatic drain, metal bowl with liquid level indicator, 40 µm element, relieving diaphragm, 5 to 150 psig (0.3 to 10 bar) outlet pressure adjustment range* with gauge.

Port Size	Model	Flow† scfm (dm ³ /s)	Weight lb (kg)
1/4"	B72G 2AK AE3 RMG	80 (38)	1.3 (0.59)
3/8"	B73G 3AK AD3 RMG	123 (58)	1.76 (0.82)
1/2"	B73G 4AK AD3 RMG	123 (58)	1.76 (0.82)
1/2"	B74G 4AK AD3 RMG	212 (100)	2.59 (1.17)
3/4"	B74G 6AK AD3 RMG	212 (100)	2.55 (1.16)

*Outlet pressure can be adjusted to pressures in excess of, and less than, those specified. Do not use these units to control pressures outside of the specified ranges.

† Typical flow with 150 psig (10 bar) inlet pressure, 90 psig (6.3 bar) set pressure and a 15 psig (1 bar) drop from set.

Options selector

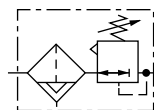
Series	Substitute	Gauge	Substitute
72	2	With	G
73	3	Without	N
74	4	Outlet pressure adjustment range*	Substitute
		5 to 60 psig (0.3 to 4 bar)	F
		5 to 150 psig (0.3 to 10 bar)	M
		10 to 250 psig (0.7 to 17 bar)**	S
		Diaphragm	Substitute
		Relieving	R
		Element	Substitute
		5 µm	1
		40 µm	3
		Bowl	Substitute
		Metal w/ liquid level indicator (72, 73, 74)	D
		Long metal w/ liquid level indicator (72)	E
		Long transparent (72)	L
		Transparent with guard (73, 74)	P
		Transparent bowl (72, 73)	T

*72 Series auto drain is available only with long bowl option.

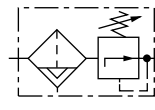
*Outlet pressure can be adjusted to pressures in excess of, and less than, those specified. Do not use these units to control pressures outside of the specified ranges.

** 250 psig (17 bar) outlet pressure range units are available with t-handle adjustment only and standard metal bowl options.

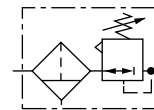
ISO Symbols



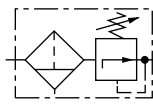
Automatic and Semi Automatic Drain Relieving



Automatic and Semi Automatic Drain Non Relieving



Manual Drain Relieving



Manual Drain Non Relieving

Excelon® modular system

B72G, B73G, B74G Filter/Regulators

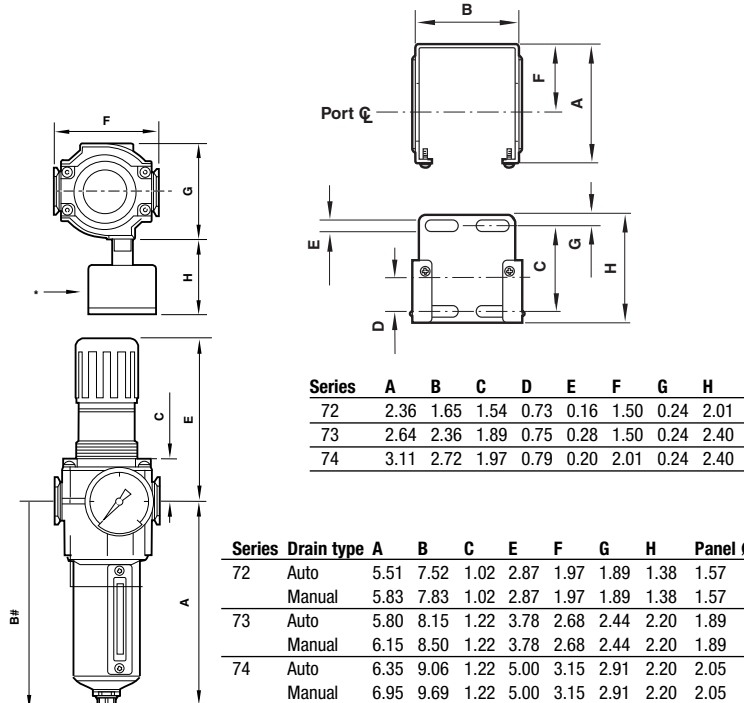
Dimensions in inches.

Accessories

	Wall mounting bracket*	Neck mounting bracket	Gauge 0 ... 160 psig	Panel nut	Tamper resistant cover and seal wire	Pipe adapters (quantity of 1) (NPT)	Quikclamp®	Quikclamp® and wall bracket	Replacement elements
B72G	4224-50	74316-50	18-013-212	4248-89	4255-51	4215-02 (1/4) 4215-03 (3/8)	4214-51	4214-52	5925-03 (5µm) 5925-02 (40µm)
B73G	4424-50	4461-50	18-013-209	5191-88	4455-51	4315-01 (1/4) 4315-02 (3/8) 4315-03 (1/2) 4315-04 (3/4)	4314-51	4314-52	4438-01 (5µm) 4438-03 (40µm)
B74G	4324-50	4368-51	18-013-209	4348-89	4355-51	4315-02 (3/8) 4315-03 (1/2) 4315-04 (3/4)	4314-51	4314-52	4338-04 (5µm) 4338-05 (40µm)

* Bracket kit does not include wall mounting screws.

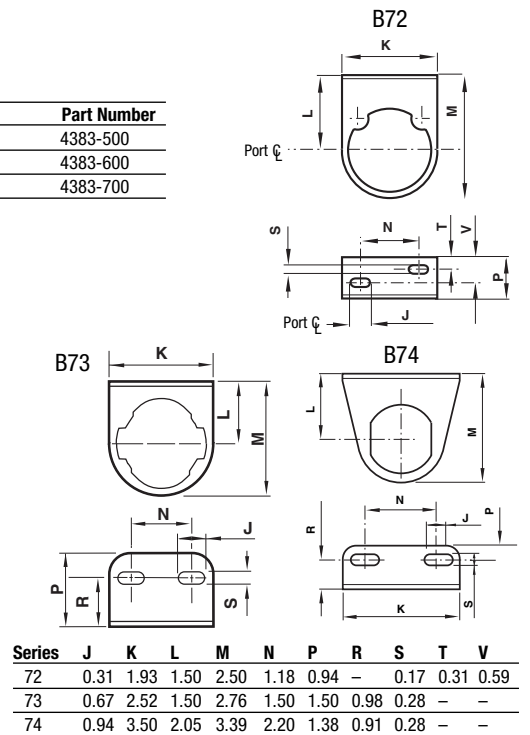
Mounting bracket



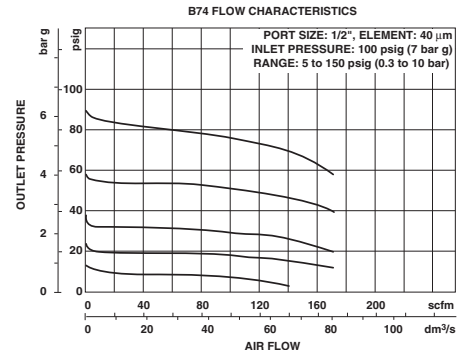
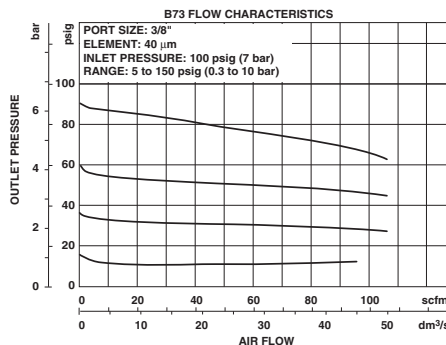
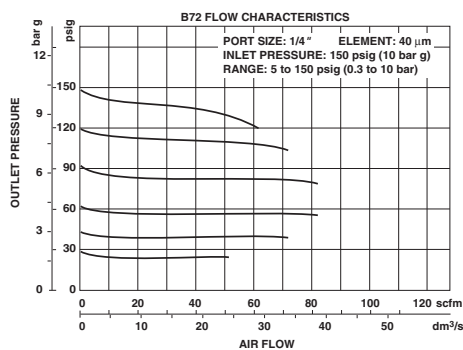
*Optional gauge.

Minimum clearance required to remove bowl.

Neck mounting brackets



Typical Performance Characteristics



Excelon® Pro B92G General Purpose Filter/Regulator

- Easy to order
- Configuration flexibility
- Excellent value
- No tools required for assembly

Technical data

Fluid: Compressed air
 Maximum pressure
 Manual drain: 175 psig (12 bar)
 Automatic drain: 150 psig (10 bar)
 Operating temperature*
 -4° to 125°F (-20° to 52°C)
 * Air supply must be dry enough to avoid ice formation at temperatures below 35°F (2°C).

Materials

Body: PBT
 Bonnet: PBT
 Valve elastomer: Geolast
 Diaphragm: Nitrile
 Transparent bowl: Polycarbonate
 Element: Sintered polypropylene
 Elastomers:
 Bowl O-ring - Neoprene
 All others - Nitrile

Automatic drain operating conditions (float operated):
 Bowl pressure required to close drain: > than 5 psig (0.35 bar)
 Bowl pressure required to open drain: < than 3 psig (0.2 bar)
 Minimum air flow required to close drain: 0.2 scfm (0.1 dm³/s)
 Manual operation: Depress pin inside drain outlet to drain bowl



Order Information

Model listed below includes 5µm element, relieving diaphragm, 145 psi outlet pressure adjustment range, manual drain, and bar/psi gauge.

Port size	Part Number	Flow* scfm (dm3/s)	Weight lb (kg)
1/4" PTF	B92G2AKQT1RMG	35 (16)	0.62 (0.28)

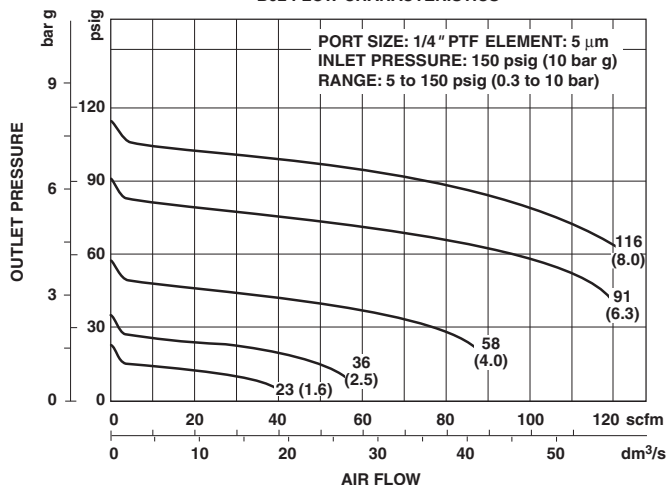
* Maximum flow with 145 psig (10 bar) inlet pressure, 90 psig (6.3 bar) set pressure and a 15 psig (1 bar) drop from set.

B92G★K★T1RM★

Substitute	Description	Substitute	Description
NN	no connection	G	Gauge bar/psi scale
1A	1/8" PTF	A	Gauge bar/Mpa scale
2A	1/4" PTF		
3A	3/8" PTF		
1B	1/8" ISO Rc		
2B	1/4" ISO Rc		
3B	3/8" ISO Rc		
1G	1/8" ISO G		
2G	1/4" ISO G		
3G	3/8" ISO G		
6D	6mm PIF		
8D	8mm (5/16") PIF		
AD	10mm PIF		
BD	12mm PIF		
4E	1/4" PIF		
6E	3/8" PIF		
8E	1/2" PIF		
2R*	1/4" PTF		
2T*	1/4" ISO Rc		
2V*	1/4" ISO G		

* Does not include mounting bracket

B92 FLOW CHARACTERISTICS



All Dimensions in Inches (mm)

Excelon® Pro Modular System

B92G, General Purpose Filter/Regulator

Accessories and Kits

Threaded connector w/mounting bracket*		Push-In-Fitting connector w/mounting bracket*		Threaded connector w/o mounting brackets		Porting block		Quikconnect (quantity of 1)	
Connection	P/N	Connection	P/N	Connection	P/N	Connection	P/N	P/N	
1/8" PTF	9212KIT-1A	6mm PIF	9213KIT-6D	1/4" PTF	9211KIT-2R	1/4" PTF	9216-50	9210-50	
1/4" PTF	9212KIT-2A	8mm (5/16") PIF	9213KIT-8D	1/4" ISO Rc	9211KIT-2T	1/4" ISO G	9216-51		
3/8" PTF	9212KIT-3A	10mm PIF	9213KIT-AD	1/4" ISO G	9211KIT-2V	1/4" ISO Rc	9216-52		
1/8" ISO Rc	9212KIT-1B	12mm PIF	9213KIT-BD	Wall mounting bracket		Panel mount nut (quantity of 10)			
1/4" ISO Rc	9212KIT-2B	1/4" PIF	9213KIT-4E						
3/8" ISO Rc	9212KIT-3B	3/8" PIF	9213KIT-6E						
1/8" ISO G	9212KIT-1G	1/2" PIF	9213KIT-8E						
1/4" ISO G	9212KIT-2G			P/N	74316-02	P/N	9248-50		
3/8" ISO G	9212KIT-3G								

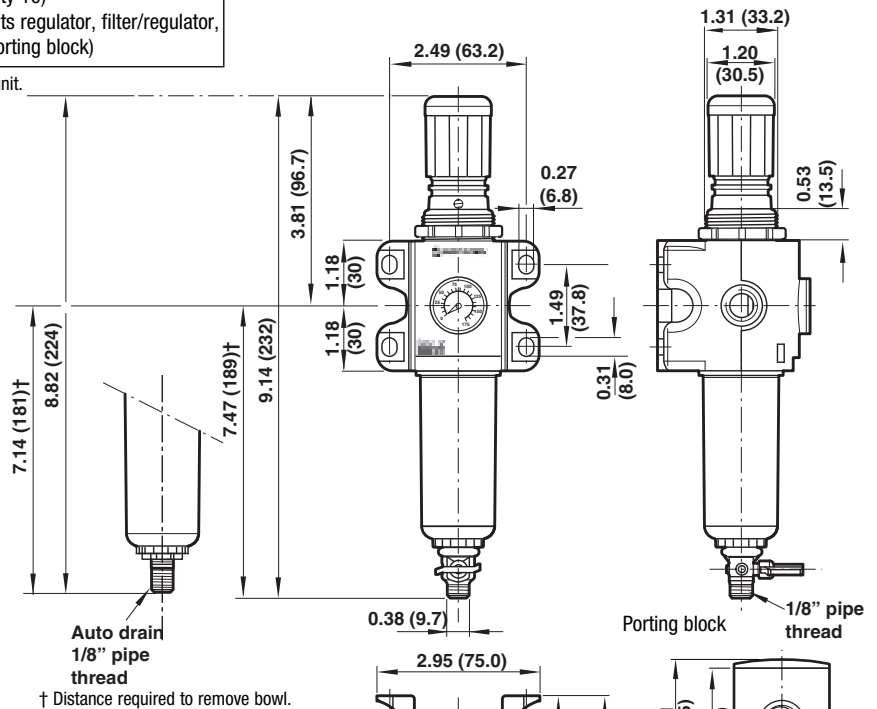
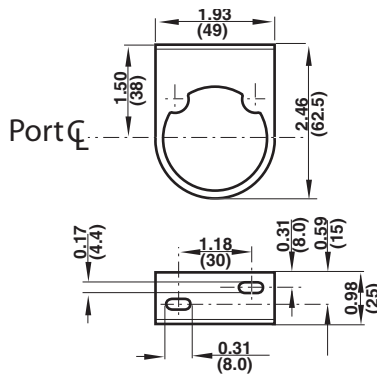
* Use 1/4" (6 mm) screws and appropriate washers when attaching brackets to a surface.

Service kit	Locking plate kits**	
P/N B92G-KITR Includes: Diaphragm assembly, valve, valve O-ring, slip ring, bowl O-ring, element, screws		
Auto Drain Assembly kit P/N 4000-50	P/N 9236-88/X10 (qty 10) (fits filter, lubricator, lockout and back of all units)	P/N 9236-89/X10 (qty 10) (fits regulator, filter/regulator, porting block)

** Locking plates **MUST** be in place before pressurizing any Excelon Pro unit.

All Dimensions in Inches (mm)

74316-02 Wall mount dimensions



* Connector Dimensions

1/8" and 1/4" threaded connectors shown. See below for port-to-port dimensions for additional connectors.

PIF Connector	Port-to-port
1/4", 6mm, 8mm (5/16")	2.37" (60.2)
3/8", 1/2", 10mm, 12mm	2.48" (61.9)
Threaded connector	
1/8", 1/4"	1.79" (45.5)
3/8"	2.99" (76.1)

