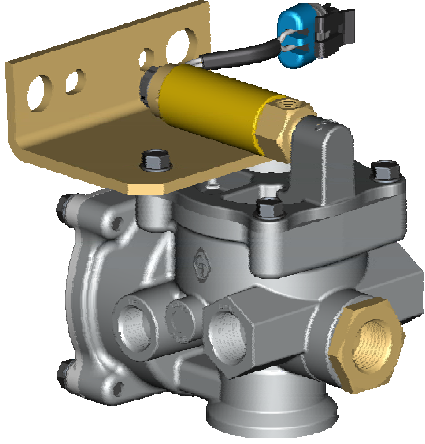


Lift Axle Control Module



This chassis-mounted lift axle control module, specifically designed for the heavy duty truck and trailer industry, provides full pneumatic control. The module includes two industry-proven brake-style relay valves integrated into a single unit for compactness and ease of installation. The module provides excellent flow capability for rapid axle actuation and is available with an optional control solenoid for electric control. More robust than commonly used spool valves that can suffer from contamination and temperature extremes.

Performance

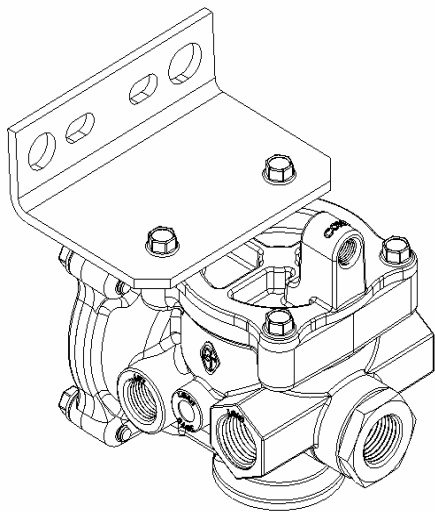
Application	Provides rapid air control of lift axles.		
Material	Cast aluminum body with thermoplastic pistons and low temperature nitrile seals		
Part Number	A) <u>Valve Type</u>	B) <u>Check Valve</u>	C) <u>Gage Port</u>
5040-XXX-XX	Air actuation (1)	no check valve (0)	no gage port (0)
	N/O solenoid (2)	check valve (1)	"A" side gage port (1)
ABC D	N/C solenoid (3)		"B" side gage port (2)
Working Pressures	Regulated pilot supply: 30-120 PSI System supply: 150 PSI MAX		
Operating Temperature	-40° (-40°C) to 190° F (87.7° C)		
Ports	1) System supply	1/2-14 NPTF	
	2) Two delivery to load bag	1/2-14 NPTF	
	3) Two delivery to lift bag	3/8-27 NPTF	
	4) Regulated supply	1/8-27 NPTF	
	5) Gage port (optional)	1/8-27 NPTF	
Minimum Flow Orifices	1) Supply to lift delivery	.38"	
	2) Lift delivery to exhaust	.40"	
	3) Supply to load delivery	.38"	
	4) Load delivery to exhaust	.40"	
Mounting	Two M12 or 1/2" bolts on 3" spacing or M8 or 5/16" bolts on 1.5" spacing		

Lift Axle Control Module

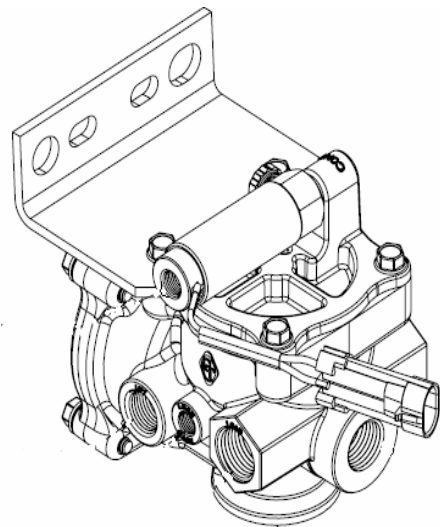
Overall Dimensions	5 1/4" H x 6" L x 4 1/8" W
Weight	3.3 to 3.4 lbs (approximate)

Electrical	Optional:	Internal 12 volt solenoid valve with Metri-pack 150 series 2 way connector.	
	Specifications:	Operating voltage	-9 to 16 volts DC
		12 volt coil resistance	-25.5 ohms at 68°F (20°C)
		Current rating	-0.47 amps at 12 volts and 68°F (20°C)
	Connectors:	5040-201-01 & 5040-301-01 use the following mating connectors:	
		-Female connector #12052641	
		-Secondary lock #12052634	
		-Female terminal pin #1204807	
		-Cable seal #12048086	

DRAWINGS



5040-110-01



5040-210-01